

# DigitalPersona® Pro Workstation v4.2.5 Upgrade Notes

## Upgrading Pro Workstation Software To Pro Workstation v4.2.5

### IMPORTANT UPGRADE RECOMMENDATIONS

While we strive to ensure safe and trouble-free system upgrades, we cannot guarantee performance in every IT environment. It is therefore strongly recommended that you carefully plan and perform reasonable precautions before any system upgrade:

- Review the Readme.txt file on the DigitalPersona Pro Workstation CD.
- **It is also strongly recommended that you review the Administrator Guide**, also located on the Workstation CD, and identify potential changes to the system administration settings.
- Perform a lab test of the upgrade that simulates your particular IT environment.
- Incrementally deploy and test your system upgrade (i.e. Server then Workstations).
- Prepare a software rollback plan to reverse any potential problems. Note that rollback to a previous release will require un-installation of a later revision of software.

### NOTEBOOKS WITH EMBEDDED SWIPE READERS

If you are upgrading from an earlier version of the DigitalPersona Pro Workstation software or installing Pro AD software for the first time on a supported notebook with an embedded swipe reader, you will need to install the driver files manually after installing/upgrading the DigitalPersona Pro Workstation software. The installation files and instructions are available in the DigitalPersona Pro Workstation CD's **Third party reader support** folder.

### UPGRADING DIGITALPERSONA PRO WORKSTATIONS

To ensure the compatibility of OTS templates across all DigitalPersona Pro Workstations and to maximize the utilization of the new features available in Pro v4.2.5, we recommend that all DigitalPersona Pro Workstations be upgraded to v4.2.5.

### END OF SUPPORT FOR VERSIONS OF PRO 3.4 AND LOWER

Effective with the release of DigitalPersona Pro Sever v4.0 and DigitalPersona Pro Workstation v4.0, DigitalPersona is no longer providing technical support for versions 3.4 and lower.

Customers who have not upgraded should contact their DigitalPersona Partner or DigitalPersona Account Manager for information regarding upgrading.



***If your current version is one of the following:***

Pro Workstation versions 3.5.1, 3.5.0

Data Migration Note:

<b><i>Application/Policy</i></b>	<b><i>Changes</i></b>	<b><i>Notes</i></b>
<b>One Touch SignOn (OTS) Templates</b>	A small percentage of the existing OTS templates may not be compatible with DigitalPersona Pro v4.2.5 and will need to be converted.	See <b>Converting OTS Templates</b> at the end of this document.
<b>Web site One Touch Internet (OTI) logon screens</b>	Small percentage of the existing web site OTI logon screens may need to be recreated/converted after upgrading to DigitalPersona Pro Workstation v4.2.5.	See <b>Converting Win32 OTI Logon Screens</b> at the end of this document.
<b>One Touch Crypto (OTC)</b>	This application is provided separately.	All files encrypted with OTC must be unencrypted before uninstalling or upgrading prior versions of DigitalPersona Pro Workstation software.

Minimum Software Upgrade Requirements:

1. Notify users to decrypt any files encrypted with One Touch Crypto.
2. Upgrade all existing DigitalPersona Pro Workstations to v4.2.5.
3. Deploy additional DigitalPersona Pro Workstations v4.2.5.
4. Remove previously added DigitalPersonaProWksta.adm from the Local Policy and add the new DigitalPersonaProWksta.adm file.

Note: For mixed environment of DigitalPersona Pro Workstation 3.X and DigitalPersona Pro Server 4.X  
*If you have deployed Pro software in a Windows Server 2003 SP1 or better environment and will continue to run a mixed environment of DigitalPersona Pro Workstation 3.X and DigitalPersona Pro Server 4.X, please read the following notice:*  
<http://www.digitalpersona.com/support/refMaterial/windows2003SP1Notice.php>

***Support for previous revisions:***

DigitalPersona Technical Support is available for the previous two (major/minor) software releases. To be eligible for technical support and to ensure optimal software upgradeability to future releases, we recommend that all versions of DigitalPersona Pro software prior to version v4.2.5 be upgraded.

***Upgrading your Pro Installation:***

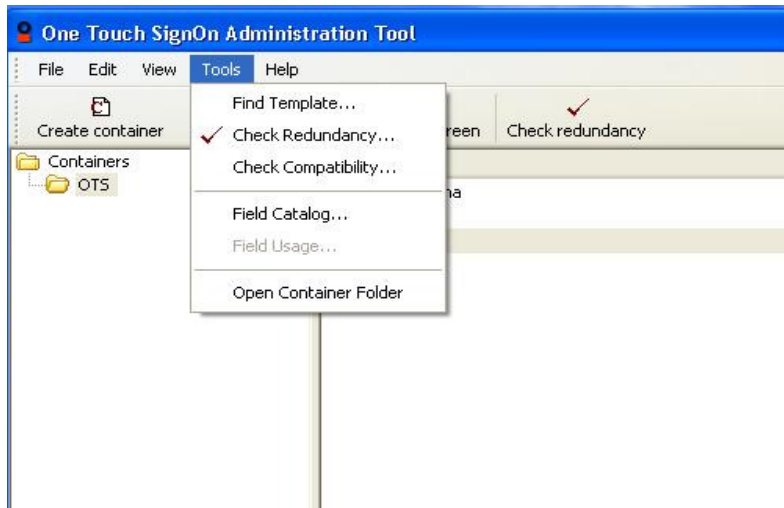
Please contact [sales@digitalpersona.com](mailto:sales@digitalpersona.com) for information & pricing to upgrade your DigitalPersona Pro installation.

***Maintenance & Support Plans:***

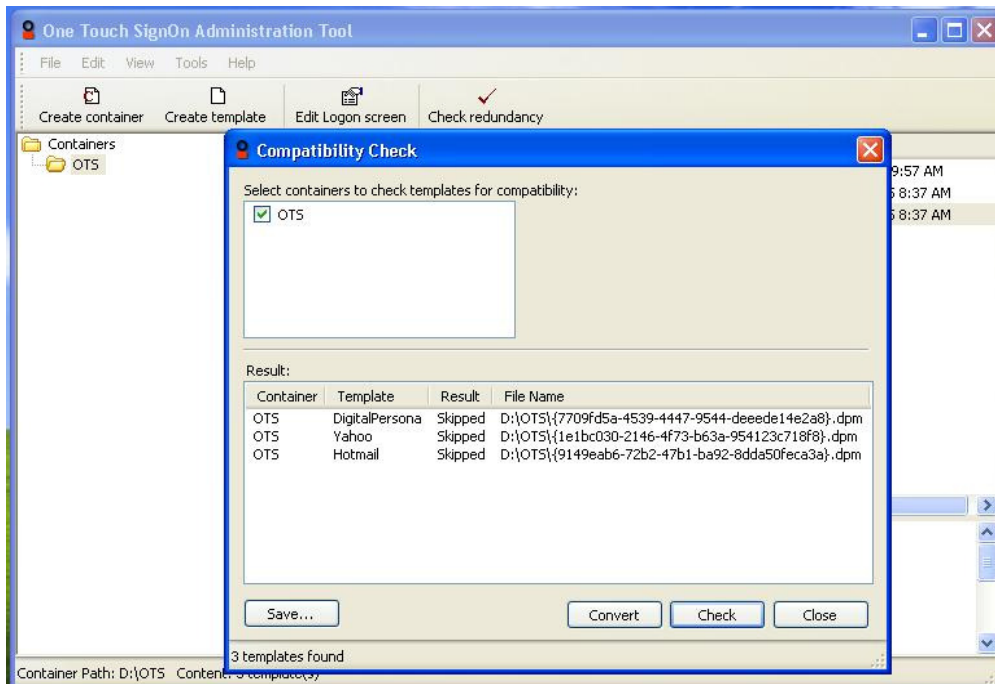
Please contact [sales@digitalpersona.com](mailto:sales@digitalpersona.com) for details and pricing for our Maintenance & Support plans.

## Converting OTS Templates

1. Install the OTS Administration Tool from the Pro Administration Tools 4.2.5 CD.
2. Start the Tool by going to Start → DigitalPersona Pro → OTS Administration Tools.
3. Go to Tools menu and click on Check Compatibility.



4. In the Check Compatibility window click on the Save button if you want to keep a backup of your current OTS templates before converting them.
5. Click on the Convert button to convert all OTS templates. The conversion utility will convert the templates and automatically save them in their current location.
6. Click on the Close button to close the Compatibility window.
7. Restart your workstation to automatically download the converted templates to your system.

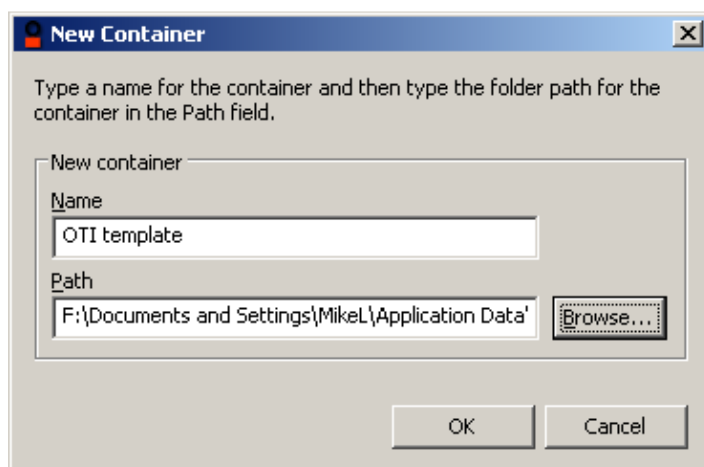
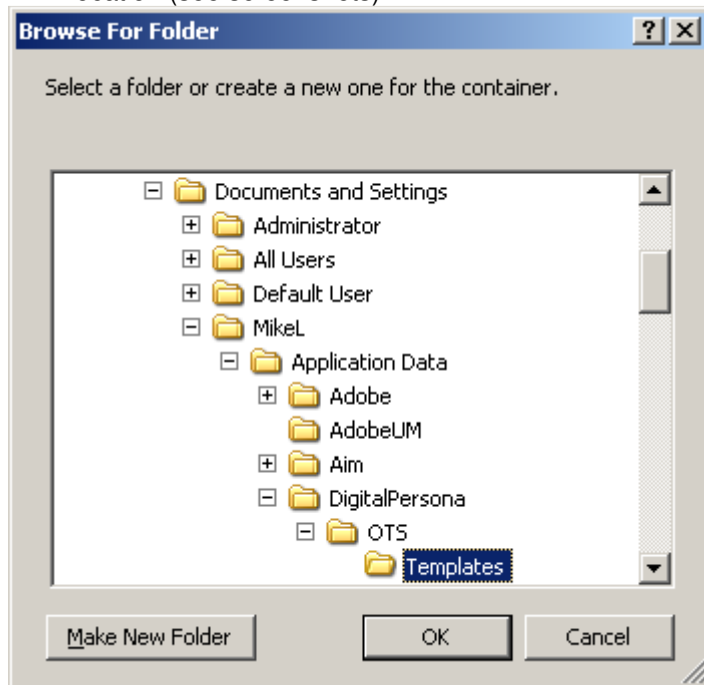


## Converting Win32 OTI Logon Screens

1. Install the OTS Administration Tool from the Pro Administration Tools 4.2.5 CD.
2. Start the Tool by going to Start → DigitalPersona Pro → OTS Administration Tools.
3. Create a new container that contains the path to the location where OTI templates are located.  
The OTI templates you created are located in a hidden folder in your user profiles folder; this folder is located at:

C:\Documents and Settings\*"Your Username"*\Application Data\DigitalPersona\OTS\Templates.

- a. Make sure all folders are not hidden (go to Explorer's Tools → Folder Options).
- b. Create a new container and use the browse button to set the path to YOUR USERNAME location (see screenshots):



4. From the OTS Admin Tools, go to Tools → Check Compatibility, then select the container that you created in step #3. Click on the "Check" button". The Tool will check for all templates in this container.
5. Click on the "Convert" button; all templates that need to be converted will be converted.

These templates can now be used with DigitalPersona Pro v4.2.5; simply go to the Application logon page and login with your registered finger.