

DigitalPersona® Pro 4.2.1 Upgrade Notes

Adding Pro Workstation 4.2.1 To An Existing Pro Server*/ Pro Workstation Installation (*Pro Server 4.1.0 to Pro Server 3.0.0)

IMPORTANT UPGRADE RECOMMENDATIONS

While we strive to ensure safe and trouble-free system upgrades, we cannot guarantee performance in every IT environment. It is therefore strongly recommend that you carefully plan and perform reasonable precautions before any system upgrade:

- Review the Readme.txt file on both the Pro Workstation and Server CDs.
- Review the Administrator Guide, also located on the Server CD, and identify potential changes to the system administration settings.
- Perform a lab test of the upgrade that simulates your particular IT environment.
- Incrementally deploy and test your system upgrade (i.e. server then workstation).
- Prepare a software rollback plan to reverse any potential problems. Note that rollback to a previous release will require un-installation of a later revision of software.

PRO 4.2.1 WORKSTATION REQUIRES THE INSTALLATION OF PRO 4.X SERVER

Please note that this release of Pro workstation cannot be deployed with Pro 3.x servers. You must install Pro 4.X Server prior to installing Pro 4.2.1 workstation in an existing Pro installation.

NOTE FOR INSTALLATIONS WITH MORE THAN ONE PRO SERVER

As noted in page 34 of the Pro 4.1 Administrator Guide:

ALL Pro servers must be upgraded to Pro v4.X before installing any Pro 4.2.1 Workstations.

NOTE FOR NOTEBOOKS WITH EMBEDDED SWIPE READERS

If you are upgrading from an earlier version of the Pro AD Workstation software or installing Pro AD software for the first time on a supported notebook (<http://www.digitalpersona.com/products/notebooks.php>) with an embedded swipe reader, you will need to install the driver files manually after installing/upgrading the Pro AD Workstation software. The installation files and instructions are available in the Pro Workstation CD's **Redistr\Third party reader support** folder.

END OF SUPPORT FOR PRO v1.X AND 2.X

Effective with the release of Pro Sever 4.0 and Pro Workstation 4.0 DigitalPersona is no longer providing technical support for versions 1.x and 2.x of Pro.

Customers who have not upgraded should contact their DigitalPersona Partner or DigitalPersona Account Manager for information regarding upgrading.

Adding Pro Workstation To An Existing Pro Server*/Workstation Installation (*Pro Server 4.1.0 to Pro Server 3.0.0)

If your current version is:

Pro Server versions	4.1.0, 4.0.1, 4.0.0
Pro Workstation versions	4.1.0, 4.0.1, 4.0.0

Data Migration Notes:

<i>Application/Policy</i>	<i>Changes</i>	<i>Notes</i>
One Touch SignOn (OTS) Templates	Small percentage of the existing OTS templates may not be compatible with Pro 4.2.1 and will need to be converted.	See Converting OTS Templates at the end of this document.
Web site One Touch Internet (OTI) & Win 32 logon screens	All existing web site OTI logon screens will continue to work after upgrading to Pro Workstation 4.2.1	
One Touch Crypto (OTC)	This application is provided separately	

Minimum Software Upgrade Requirements:

1. Install Pro Workstations 4.2.1 in your deployment.

If your current version is:

Pro Server versions	4.1.0, 4.0.1, 4.0.0
Pro Workstation versions	3.5.1, 3.5.0, 3.4.0, 3.2.2, 3.2.1, 3.2.0

Data Migration Notes:

<i>Application/Policy</i>	<i>Changes</i>	<i>Notes</i>
One Touch SignOn (OTS) Templates	Small percentage of the existing OTS templates may not be compatible with Pro 4.2.1 and will need to be converted.	See Converting OTS Templates at the end of this document.
Web site One Touch Internet (OTI) & Win 32 logon screens	Small percentage of the existing web site OTI logon screens may need to be recreated/converted after upgrading to Pro Workstation 4.2.1	See Converting Win32 OTI Logon Screens at the end of this document.
One Touch Crypto (OTC)	This application is provided separately	Pro 4.X.X users will not be able to encrypt/un-encrypt files; Existing OTC users will be able to continue using OTC.

Minimum Software Upgrade Requirements:

1. Install Pro Workstations 4.2.1 in your deployment.
2. Creating new OTS templates – To create new templates in a mixed Pro Workstation environment (i.e., Pro Workstation v4.2.1 and 3.x):
 - a. Create the new OTS template **using the OTS Administration Tool from Pro v3.2 to v3.5 of Pro Workstation**
If Pro 4.2.1 Workstation software is unable work with the new templates, you'll need to upgrade all your workstations to 4.2.1 and then convert the new template using the 4.2.1 OTS Admin tool. See **Converting OTS Templates** at the end of this document.

For mixed environment of Pro AD Workstation 3.X and 4.X -

If you have deployed Pro software in a Windows Server 2003 SP1 environment and will continue to run a mixed environment of Pro AD Workstation versions 3.X and 4.X, please read the following notice:

<http://www.digitalpersona.com/support/referenceMat/windows2003SP1Notice.html>

If your current version is:

Pro Server versions	3.5.0, 3.4.0, 3.3.2, 3.3.1
Pro Workstation versions	3.5.1, 3.5.0, 3.4.0, 3.2.2, 3.2.1, 3.2.0

Data Migration Notes:

<i>Application/Policy</i>	<i>Changes</i>	<i>Notes</i>
One Touch SignOn (OTS) Templates	Small percentage of the existing OTS templates may not be compatible with Pro 4.2.1 and will need to be converted.	See Converting OTS Templates at the end of this document.
Web site One Touch Internet (OTI) & Win 32 logon screens	Small percentage of the existing web site OTI logon screens may need to be recreated/converted after upgrading to Pro Workstation 4.2.1	See Converting Win32 OTI Logon Screens at the end of this document.
One Touch Crypto (OTC)	This application is provided separately	Pro 4.X.X users will not be able to encrypt/un-encrypt files; Existing OTC users will be able to continue using OTC.
Pro User & Computer Policies	The administration of these policies were changed as of v3.5.0	See Extended Server Policy Module at the end of this document

Minimum Software Upgrade Requirements:

1. Uninstall existing Pro Servers
2. Launch the Domain Configuration Wizard located on the Server CD
3. Install Pro Server 4.1.0 (no restart is required)
4. Remove all previously added DigitalPersona Administrative Template files (.adm) from the GPO and add the new Administrative Template files (.adm) files
5. Install the License file, using the License Control Manager
6. Install Pro Workstations 4.2.1 in your deployment.
7. Creating new OTS templates – To create new templates in a mixed Pro Workstation environment (i.e., Pro Workstation v4.2.1 and 3.x):
 - a. Create the new OTS template **using the OTS Administration Tool from Pro v3.2 to v3.5 of Pro Workstation**
If Pro 4.2.1 Workstation software is unable work with the new templates, you'll need to upgrade all your workstations to 4.2.1 and then convert the new template using the 4.2.1 OTS Admin tool. See **Converting OTS Templates** at the end of this document.

For mixed environment of Pro AD Workstation 3.X and 4.X -

If you have deployed Pro software in a Windows Server 2003 SP1 environment and will continue to run a mixed environment of Pro AD Workstation versions 3.X and 4.X, please read the following notice:

<http://www.digitalpersona.com/support/referenceMat/windows2003SP1Notice.html>

If your current version is:

Pro Server versions	3.5.0, 3.4.0, 3.3.1, 3.3.2
Pro Workstation versions	3.1.0, 3.0.2, 3.0.1, 3.0.0

Data Migration Note:

<i>Application/Policy</i>	<i>Changes</i>	<i>Notes</i>
One Touch SignOn (OTS) Templates	Existing OTS templates need to be converted to work with Pro 4.2.1	See Converting OTS Templates at the end of this document.
Web site One Touch Internet (OTI) & Win 32 logon screens	Small percentage of the existing web site OTI logon screens may need to be recreated/converted after upgrading to Pro Workstation 4.2.1	See Converting Win32 OTI Logon Screens at the end of this document.
One Touch Crypto (OTC)	This application is provided separately	Pro 4.X.X users will not be able to encrypt/un-encrypt files; Existing OTC users will be able to continue using OTC.
Pro User & Computer Policies	The administration of these policies were changed as of v3.5.0	See Extended Server Policy Module at the end of this document

Software Upgrade Requirements:

1. Uninstall existing Pro Servers
2. Launch the Domain Configuration Wizard located on the Server CD
3. Install Pro Server 4.1.0 (no restart is required)
4. Remove all previously added DigitalPersona Administrative Template files (.adm) from the GPO and add the new Administrative Template files (.adm) files
5. Install the License file using the License Control Manager
6. Install Pro Workstations 4.2.1 in your deployment.
7. Upgrade all existing Pro Workstations to 4.2.1.
8. Convert all existing OTS templates using 4.2.1 OTS Administration tool. See **Converting OTS Templates** at the end of this document.

For mixed environment of Pro AD Workstation 3.X and 4.X -

If you have deployed Pro software in a Windows Server 2003 SP1 environment and will continue to run a mixed environment of Pro AD Workstation versions 3.X and 4.X, please read the following notice:

<http://www.digitalpersona.com/support/referenceMat/windows2003SP1Notice.html>

If your current version is:

Pro Server versions 3.3.0
Pro Workstation versions 3.5.1, 3.5.0, 3.4.0, 3.2.2, 3.2.1, 3.2.0

Data Migration Note:

<i>Application/Policy</i>	<i>Changes</i>	<i>Notes</i>
One Touch SignOn (OTS) Templates	Small percentage of the existing OTS templates may not be compatible with Pro 4.2.1 and will need to be converted.	See Converting OTS Templates at the end of this document.
Web site One Touch Internet (OTI) & Win 32 logon screens	Small percentage of the existing web site OTI logon screens may need to be recreated/converted after upgrading to Pro Workstation 4.2.1	See Converting Win32 OTI Logon Screens at the end of this document.
One Touch Crypto (OTC)	This application is provided separately	Pro 4.X.X users will not be able to encrypt/un-encrypt files; Existing OTC users will be able to continue using OTC.
Pro User & Computer Policies	The administration of these policies were changed as of v3.5.0	See Extended Server Policy Module at the end of this document

Software Upgrade Requirements:

1. Uninstall existing Pro Servers
2. Launch the Domain Configuration Wizard located on the Server CD
3. Install Pro Server 4.1.0 (no restart is required)
4. Remove all previously added DigitalPersona Administrative Template files (.adm) from the GPO and add the new Administrative Template files (.adm) files
5. Install the License file using the License Control Manager
6. Install Pro Workstations 4.2.1 in your deployment.
7. Creating new OTS templates – To create new templates in a mixed Pro Workstation environment (i.e., Pro Workstation v4.2.1 and 3.x):
 - a. Create the new OTS template **using the OTS Administration Tool from Pro v3.2 to v3.5 of Pro Workstation**
If Pro 4.2.1 Workstation software is unable work with the new templates, you'll need to upgrade all your workstations to 4.2.1 and then convert the new template using the new OTS Admin tool. See **Converting OTS Templates** at the end of this document.

For mixed environment of Pro AD Workstation 3.X and 4.X -

If you have deployed Pro software in a Windows Server 2003 SP1 environment and will continue to run a mixed environment of Pro AD Workstation versions 3.X and 4.X, please read the following notice:

<http://www.digitalpersona.com/support/referenceMat/windows2003SP1Notice.html>

If your current version is:

Pro Server versions 3.3.0
Pro Workstation versions 3.1.0, 3.0.2, 3.0.1, 3.0.0

Data Migration Note:

<i>Application/Policy</i>	<i>Changes</i>	<i>Notes</i>
One Touch SignOn (OTS) Templates	Existing OTS templates need to be converted to work with Pro 4.2.1	See Converting OTS Templates at the end of this document.
Web site One Touch Internet (OTI) & Win 32 logon screens	Small percentage of the existing web site OTI logon screens may need to be recreated/converted after upgrading to Pro Workstation 4.2.1	See Converting Win32 OTI Logon Screens at the end of this document.
One Touch Crypto (OTC)	This application is provided separately	Pro 4.X.X users will not be able to encrypt/un-encrypt files; Existing OTC users will be able to continue using OTC.
Pro User & Computer Policies	The administration of these policies were changed as of v3.5.0	See Extended Server Policy Module at the end of this document

Software Upgrade Requirements:

1. Uninstall existing Pro Servers
2. LaunchInstall the Domain Configuration Wizard located on the Server CD
3. Install Pro Server 4.1.0 (no restart is required)
4. Remove all previously added DigitalPersona Administrative Template files (.adm) from the GPO and add the new Administrative Template files (.adm) files
5. Install the License file using the License Control Manager
6. Install Pro Workstations 4.2.1 in your deployment.
7. Upgrade all existing Pro Workstations to 4.2.1.
8. Convert all existing OTS templates using 4.2.1 OTS Administration tool. See **Converting OTS Templates** at the end of this document.

For mixed environment of Pro AD Workstation 3.X and 4.X -

If you have deployed Pro software in a Windows Server 2003 SP1 environment and will continue to run a mixed environment of Pro AD Workstation versions 3.X and 4.X, please read the following notice:

<http://www.digitalpersona.com/support/referenceMat/windows2003SP1Notice.html>

If your current version is:

Pro Server versions	3.2.0
Pro Workstation versions	3.5.1, 3.5.0, 3.4.0, 3.2.2, 3.2.1, 3.2.0

Data Migration Note:

<i>Application/Policy</i>	<i>Changes</i>	<i>Notes</i>
One Touch SignOn (OTS) Templates	Small percentage of the existing OTS templates may not be compatible with Pro 4.2.1 and will need to be converted.	See Converting OTS Templates at the end of this document.
Web site One Touch Internet (OTI) & Win 32 logon screens	Small percentage of the existing web site OTI logon screens may need to be recreated/converted after upgrading to Pro Workstation 4.2.1	See Converting Win32 OTI Logon Screens at the end of this document.
One Touch Crypto (OTC)	This application is provided separately	Pro 4.X.X users will not be able to encrypt/un-encrypt files; Existing OTC users will be able to continue using OTC.
Pro User & Computer Policies	The administration of these policies were changed as of v3.5.0	See Extended Server Policy Module at the end of this document

Software Upgrade Requirements:

1. Uninstall existing Pro Servers
2. Launch the Domain Configuration Wizard located on the Server CD
3. Install Pro Server 4.1.0 (no restart is required)
4. Remove all previously added DigitalPersona Administrative Template files (.adm) from the GPO and add the new Administrative Template files (.adm) files
5. Install the License file using the License Control Manager
6. Install Pro Workstations 4.2.1 in your enterprise.
7. Creating new OTS templates – To create new templates in a mixed Pro Workstation environment (i.e., Pro Workstation v4.2.1 and 3.x):
 - a. Create the new OTS template **using the OTS Administration Tool from Pro v3.2 to v3.5 of Pro Workstation**
If Pro 4.2.1 Workstation software is unable work with the new templates, you'll need to upgrade all your workstations to 4.2.1 and then convert the new template using the new OTS Admin tool. See **Converting OTS Templates** at the end of this document.

For mixed environment of Pro AD Workstation 3.X and 4.X -

If you have deployed Pro software in a Windows Server 2003 SP1 environment and will continue to run a mixed environment of Pro AD Workstation versions 3.X and 4.X, please read the following notice:

<http://www.digitalpersona.com/support/referenceMat/windows2003SP1Notice.html>

If your current version is:

Pro Server versions	3.1.0, 3.0.1, 3.0.0
Pro Workstation versions	3.5.1, 3.5.0, 3.4.0, 3.2.2, 3.2.1, 3.2.0

Data Migration Note:

<i>Application/Policy</i>	<i>Changes</i>	<i>Notes</i>
One Touch SignOn (OTS) Templates	Small percentage of the existing OTI templates may not be compatible with Pro 4.2.1 and will need to be converted.	See Converting OTS Templates at the end of this document.
Web site One Touch Internet (OTI) & Win 32 logon screens	Small percentage of the existing web site OTI logon screens may need to be recreated/converted after upgrading to Pro Workstation 4.2.1	See Converting Win32 OTI Logon Screens at the end of this document.
One Touch Crypto (OTC)	This application is provided separately	Pro 4.X.X users will not be able to encrypt/un-encrypt files; Existing OTC users will be able to continue using OTC.

Software Upgrade Requirements:

1. Uninstall existing Pro Servers
2. Launch the Domain Configuration Wizard located on the Server CD
3. Install Pro Server 4.1.0 (no restart is required)
4. Remove all previously added DigitalPersona Administrative Template files (.adm) from the GPO and add the new Administrative Template files (.adm) files
5. Install the License file using the License Control Manager
6. Convert existing OTS templates using the OTS Administration Tool, save these converted templates to a different location and distribute them to the Pro 4.1.0 workstations
7. Install Pro Workstations 4.2.1 in your deployment.
8. Creating new OTS templates – To create new templates in a mixed Pro Workstation environment (i.e., Pro Workstation v4.2.1 and 3.x):
 - a. Create the new OTS template **using the OTS Administration Tool from Pro v3.2 to v3.5 of Pro Workstation**
If Pro 4.2.1 Workstation software is unable work with the new templates, you'll need to upgrade all your workstations to 4.2.1 and then convert the new template using the new OTS Admin tool. See **Converting OTS Templates** at the end of this document.

For mixed environment of Pro AD Workstation 3.X and 4.X -

If you have deployed Pro software in a Windows Server 2003 SP1 environment and will continue to run a mixed environment of Pro AD Workstation versions 3.X and 4.X, please read the following notice:

<http://www.digitalpersona.com/support/referenceMat/windows2003SP1Notice.html>

If your current version is:

Pro Server versions	3.1.0, 3.0.1
Pro Workstation versions	3.1.0, 3.0.2, 3.0.1, 3.0.0

Data Migration Note:

<i>Application/Policy</i>	<i>Changes</i>	<i>Notes</i>
One Touch SignOn (OTS) Templates	Existing OTS templates need to be converted to work with Pro 4.2.1	See Converting OTS Templates at the end of this document.
Web site One Touch Internet (OTI) & Win 32 logon screens	Small percentage of the existing web site OTI logon screens may need to be recreated/converted after upgrading to Pro Workstation 4.2.1	See Converting Win32 OTI Logon Screens at the end of this document.
One Touch Crypto (OTC)	This application is provided separately	Pro 4.X.X users will not be able to encrypt/un-encrypt files; Existing OTC users will be able to continue using OTC.

Software Upgrade Requirements:

1. Uninstall existing Pro Servers
2. Launch the Domain Configuration Wizard located on the Server CD
3. Install Pro Server 4.1.0 (no restart is required)
4. Remove all previously added DigitalPersona Administrative Template files (.adm) from the GPO and add the new Administrative Template files (.adm) files
5. Install the License file using the License Control Manager
6. Install Pro Workstations 4.2.1 in your deployment.
7. Upgrade all existing Pro Workstations to 4.2.1.
8. Convert all existing OTS templates using 4.2.1 OTS Administration tool. See **Converting OTS Templates** at the end of this document.

For mixed environment of Pro AD Workstation 3.X and 4.X -

If you have deployed Pro software in a Windows Server 2003 SP1 environment and will continue to run a mixed environment of Pro AD Workstation versions 3.X and 4.X, please read the following notice:

<http://www.digitalpersona.com/support/referenceMat/windows2003SP1Notice.html>

If your current version is:

Pro Server versions	3.0.0
Pro Workstation versions	3.1.0, 3.0.1, 3.0.0

Data Migration Note:

<i>Application/Policy</i>	<i>Changes</i>	<i>Notes</i>
One Touch SignOn (OTS) Templates	Existing OTS templates need to be converted to work with Pro 4.2.1	See Converting OTS Templates at the end of this document.
Web site One Touch Internet (OTI) & Win 32 logon screens	Small percentage of the existing web site OTI logon screens may need to be recreated/converted after upgrading to Pro Workstation 4.2.1	See Converting Win32 OTI Logon Screens at the end of this document.
One Touch Crypto (OTC)	This application is provided separately	Pro 4.X.X users will not be able to encrypt/un-encrypt files; Existing OTC users will be able to continue using OTC.

Software Upgrade Requirements:

1. Uninstall existing Pro Servers
2. Launch the Domain Configuration Wizard located on the Server CD
3. Install Pro Server 4.1.0 (no restart is required)
4. Remove all previously added DigitalPersona Administrative Template files (.adm) from the GPO and add the new Administrative Template files (.adm) files
5. Install the License file using the License Control Manager
6. Install Pro Workstations 4.2.1 in your deployment.
7. Upgrade all existing Pro Workstations to 4.2.1.
8. Convert all existing OTS templates using 4.2.1 OTS Administration tool. See **Converting OTS Templates** at the end of this document.

For mixed environment of Pro AD Workstation 3.X and 4.X -

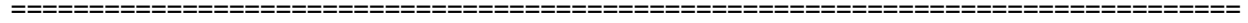
If you have deployed Pro software in a Windows Server 2003 SP1 environment and will continue to run a mixed environment of Pro AD Workstation versions 3.X and 4.X, please read the following notice:

<http://www.digitalpersona.com/support/referenceMat/windows2003SP1Notice.html>

For Installations with Pro v1.x or 2.x

Please contact your DigitalPersona Partner or DigitalPersona Account Manager to discuss your software upgrade options.

*Please contact DigitalPersona Technical Support at:
<http://www.digitalpersona.com/support/enterprise/chooseproduct.php>
for additional assistance in planning your migration to Pro Server and Pro Workstation 4.2.1*



Support for previous revisions:

DigitalPersona Technical Support is available for the previous two (major/minor) software releases. To be eligible for technical support and to ensure optimal software upgradeability to future releases, we recommend that all versions of Pro software prior to version 4.0.0 be upgraded.

Upgrading your Pro Installation:

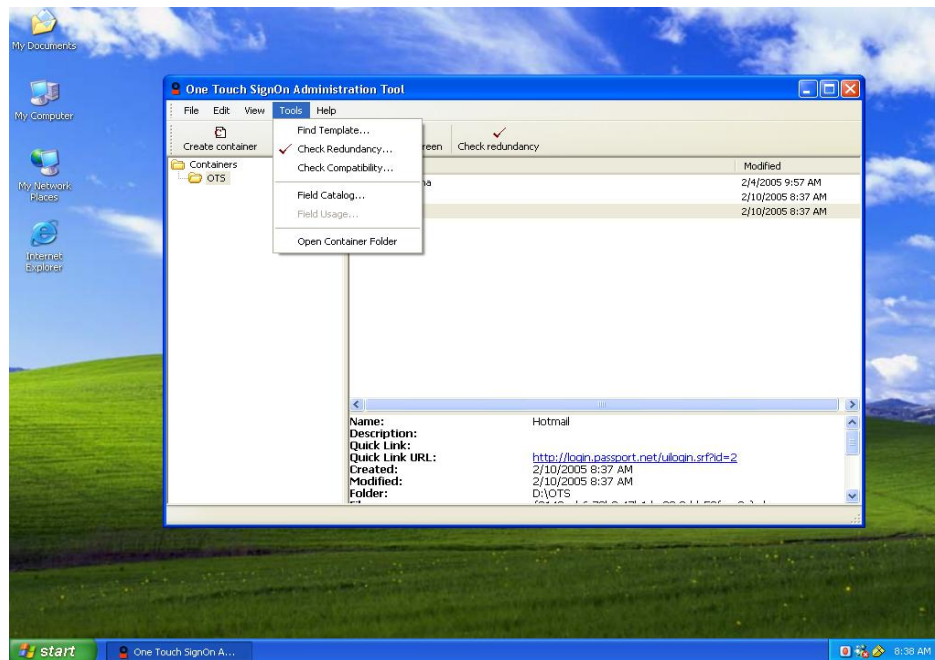
Please contact sales@digitalpersona.com for information & pricing to upgrade your Pro installation.

Maintenance & Support Plans:

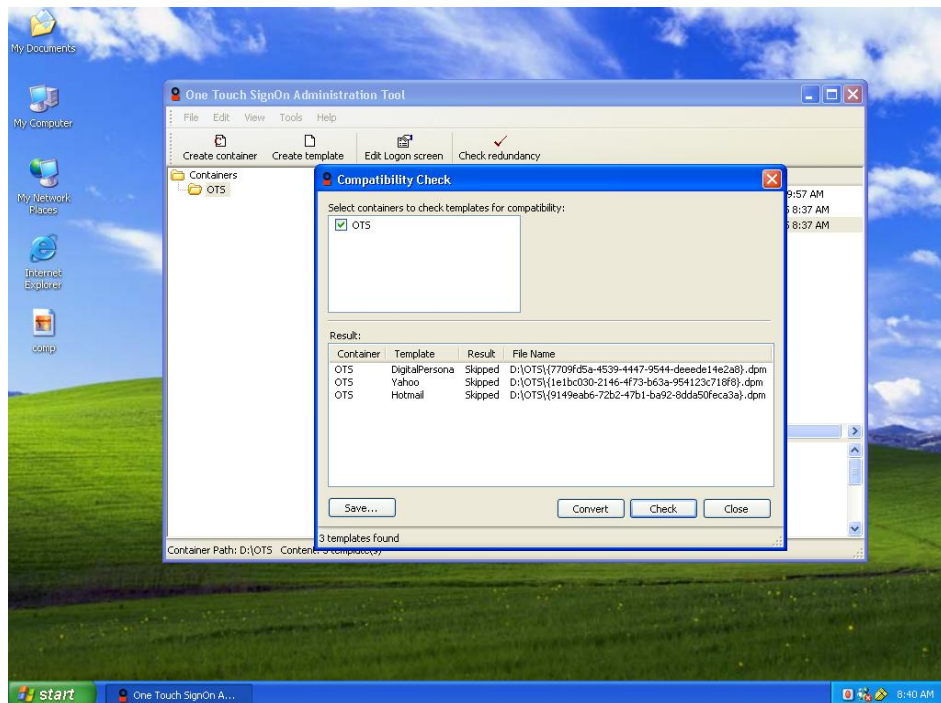
Please contact sales@digitalpersona.com for details and pricing for our Maintenance & Support plans.

Converting OTS Templates

1. Open the OTS Administration Tool.
2. Go to Tools menu and click on Check Compatibility



3. In the Check Compatibility window click on the Save button if you want to keep a backup of your current OTS templates before converting them.
4. Click on the Convert button to convert all OTS templates. The conversion utility will convert the templates and automatically save them in their current location.
5. Click on the Close button to close the Compatibility window.
6. Restart your workstation to automatically download the converted templates to your system.

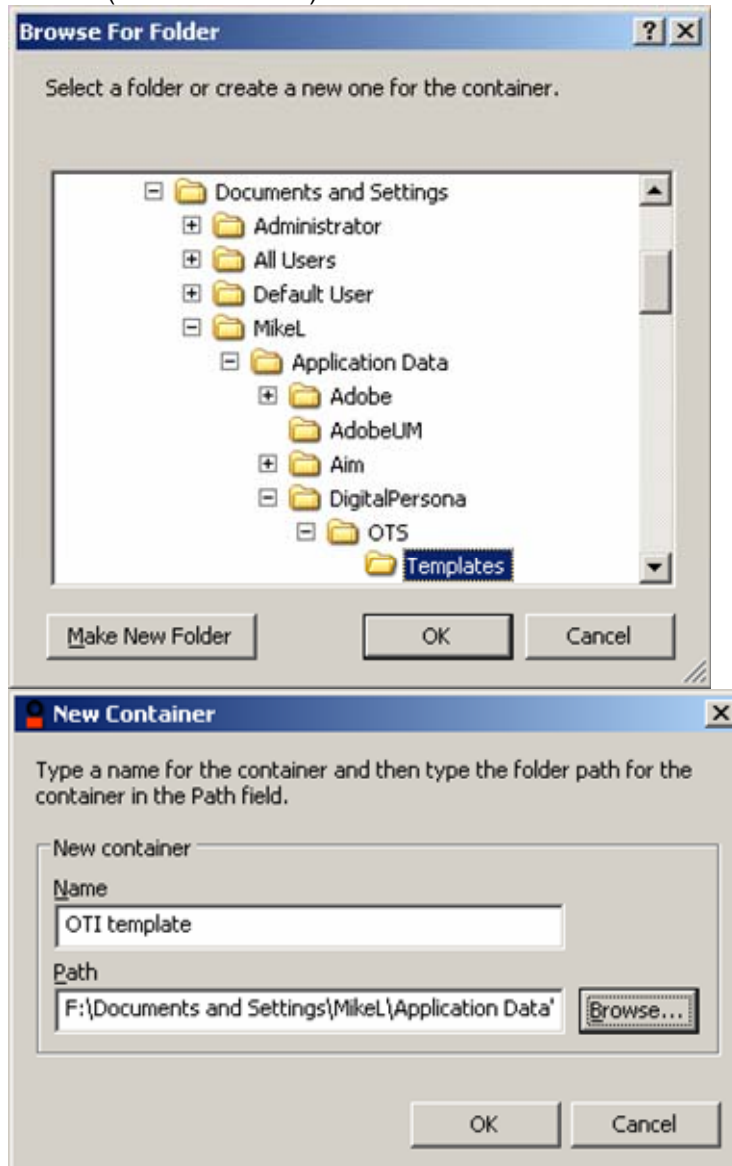


Converting Win32 OTI Logon Screens

1. Install the OTS Administration Tool from the Pro Workstation 4.2.1 CD
2. Start the Tool by going to Start-> DigitalPersona Pro-> OTS Administration Tools
3. Create a new container that contains the path to the location where OTI templates are located. The OTI templates you created are located in a hidden folder in your user profiles folder; this folder is located at:

C:\Documents and Settings\Your Username\Application Data\DigitalPersona\OTS\Templates.

- a. Make sure all folders are not hidden (go to Explorer's Tools->Folder Options)
- b. Create a new container and use the browse button to set the path to YOUR USERNAME location (see screenshots):



4. From the OTS Admin Tools, go to Tools-> Check Compatibility, then select the container that you created in step #3. Click on the "Check button". The Tool will check for all templates in this container.
5. Click on the "Convert" button; all templates that need to be converted will be converted.

These templates can now be used with Pro Workstation 4.2.1; simply go to the Application logon page and login with your registered finger.

Extended Server Policy Module

In the Pro 3.5 release, the User and Computer Policies were divided into two separate groups, Basic and Extended. Pro 4.2.1 retains these two groups.

All of these policies were previously included with the Pro Server Software (v3.2 – 3.4). The version 4.2.1 release of Pro Server includes only the three Basic User Policies. The Extended Server Policy Module contains all five User Policies and is available as a standalone module from DigitalPersona and its authorized Partners. The following table describes the policies included in the Server component (Basic) and the Extended snap-in module.

4.0 User Policy text	Location of Policy
User provides only Windows credentials to log on	Basic and Extended
User must provide a fingerprint to log on.	Extended
User must type a PIN when providing a fingerprint to log on	Extended
Randomize user's Windows password	Basic and Extended
Account is locked out from use of fingerprint credentials	Basic and Extended

Customers who have been using either of the two Extended Policies (shown in red) in Pro Server 3.4 or a prior version of Pro Server should contact sales@digitalpersona.com to request pricing for the Extended Server Policy Module.