

DigitalPersona® Pro Server 3.5.0 - Pro Workstation 3.5.0 Upgrade Notes

Upgrading an Existing Pro Server*/Workstation Installation To Pro Server 3.5.0 and Pro Workstation 3.5.0 (*Pro Server 3.4.0 to Pro Server 3.0.1)

IMPORTANT UPGRADE RECOMMENDATIONS

While we strive to ensure safe and trouble-free system upgrades, we cannot guarantee performance in every IT environment. It is therefore strongly recommend that you carefully plan and perform reasonable precautions before any system upgrade:

- Review the Readme.txt file on both the Pro Workstation and Server CD.
- Review the Administrator Guide and identify potential changes to the system administration settings.
- Perform a lab test of the upgrade that simulates your particular IT environment.
- Incrementally deploy and test your system upgrade (i.e. server then workstation).
- Prepare a software rollback plan to reverse any potential problems. Note that rollback to a previous release will require un-installation of a later revision of software.

Upgrading an Existing Pro Server*/Workstation Installation To Pro Server 3.5.0 and Workstation 3.5.0 (*Pro Server 3.4.0 to Pro Server 3.0.1)

If you have deployed Pro software in a Windows Server 2003 environment, please read the following notice, before installing Windows Server 2003 Service Pack 1:
<http://www.digitalpersona.com/support/referenceMat/windows2003SP1Notice.html>

If your current version is:

Pro Server versions	3.4.0, 3.3.2/3.3.1
Pro Workstation versions	3.4.0, 3.2.2, 3.2.1, 3.2.0

Data Migration Note:

Pro User and Computer Policies: Pro 3.5.0 introduces changes in the administration of these policies; these changes are explained at the end of this document (see **Extended Server Policy Module**).

One Touch SignOn (OTS) Templates: All existing OTS templates will continue to work after upgrading to Pro Server and Pro Workstation 3.5.0.

Web site One Touch Internet (OTI) logon screens: All existing web site OTI logon screens will continue to work after upgrading to Pro Server and Pro Workstation 3.5.0.

Win32 OTI Logon screens: All existing Win32 application OTI logon screens setup by end-users will continue to work after upgrading to Pro Server and Pro Workstation 3.5.0.

Minimum Software Upgrade Requirements:

1. Upgrade existing Pro Servers to Pro Server 3.5.0.
2. Upgrade all existing Pro Workstation to 3.5.0

If your current version is:

Pro Server versions	3.4.0, 3.3.1/3.3.2
Pro Workstation versions	3.1.0, 3.0.2, 3.0.1, 3.0.0, 2.1.4, 2.1.2*, 2.1.1

Data Migration Note:

Pro User and Computer Policies: Pro 3.5.0 introduces changes in the administration of these policies; these changes are explained at the end of this document (see **Extended Server Policy Module**).

One Touch SignOn (OTS) Templates: Existing OTS templates need to be converted to work with Pro Workstation 3.5.0 (see **Converting OTS Templates** at the end of this document).

Web site One Touch Internet (OTI) logon screens: All existing web site OTI logon screens will continue to work after upgrading to Pro Server 3.5.0 and Pro Workstation 3.5.0.

Win32 OTI Logon screens: All existing Win32 application OTI logon screens setup by end-users need to be converted or recreated after upgrading to Pro Workstation 3.5.0 (see **Converting Win32 OTI Logon Screens** at the end of this document).

One Touch Crypto (OTC): This application is not provided in Pro 3.5.0. All files encrypted with OTC must be unencrypted before uninstalling or upgrading prior versions of Pro Workstation software.

***Pro Workstation 2.1.2:** all existing application logon screens setup by end-users need to be recreated with OTI after upgrading to Pro 3.5.0

Software Upgrade Requirements:

1. Upgrade existing Pro Servers to Pro Server 3.5.0.
2. Notify users to decrypt any files encrypted with One Touch Crypto
3. Convert any existing OTS templates using the OTS Administration Tool
4. Upgrade all existing Pro Workstation to 3.5.0
5. Deploy additional Pro Workstation 3.5.0

If your current version is:

Pro Server versions	3.3.0
Pro Workstation versions	3.4.0, 3.2.2, 3.2.1, 3.2.0

Data Migration Note:

Pro User and Computer Policies: Pro 3.5.0 introduces changes in the administration of these policies; these changes are explained at the end of this document (see **Extended Server Policy Module**).

One Touch SignOn (OTS) Templates: All existing OTS templates will continue to work after upgrading to Pro Server and Pro Workstation 3.5.0.

Web site One Touch Internet (OTI) logon screens: All existing web site OTI logon screens will continue to work after upgrading to Pro Server and Pro Workstation 3.5.0.

Win32 OTI Logon screens: All existing Win32 application OTI logon screens setup by end-users will continue to work after upgrading to Pro Server and Pro Workstation 3.5.0.

Software Upgrade Requirements:

1. Upgrade existing Pro Servers to Pro Server 3.5.0.
2. Remove all previously added DigitalPersona Administrative Template files (.adm) from the GPO and add the new DigitalPersonaPro.adm file.
3. **If Pro workstation software is installed on any Windows NT or Windows 98 systems, a second .adm file must be used** to configure the NETLOGON share of the domain controller:
DigitalPersonaProWks98-NT.adm
4. Upgrade all existing Pro Workstation to 3.5.0
5. Deploy additional Pro Workstation 3.5.0

If your current version is:

Pro Server versions	3.3.0
Pro Workstation versions	3.1.0, 3.0.2, 3.0.1, 3.0.0, 2.1.4, 2.1.2*, 2.1.1

Data Migration Note:

Pro User and Computer Policies: Pro 3.5.0 introduces changes in the administration of these policies; these changes are explained at the end of this document (see **Extended Server Policy Module**).

One Touch SignOn (OTS) Templates: Existing OTS templates need to be converted to work with Pro Workstation 3.5.0 (see **Converting OTS Templates** at the end of this document).

Web site One Touch Internet (OTI) logon screens: All existing web site OTI logon screens will continue to work after upgrading to Pro Server 3.5.0 and Pro Workstation 3.5.0.

Win32 OTI Logon screens: All existing Win32 application OTI logon screens setup by end-users need to be converted or recreated after upgrading to Pro Workstation 3.5.0 (see **Converting Win32 OTI Logon Screens** at the end of this document).

One Touch Crypto (OTC): This application is not provided in Pro 3.5.0. All files encrypted with OTC must be unencrypted before uninstalling or upgrading prior versions of Pro Workstation software.

***Pro Workstation 2.1.2:** all existing application logon screens setup by end-users need to be recreated with OTI after upgrading to Pro 3.5.0

Software Upgrade Requirements:

1. Upgrade existing Pro Servers to Pro Server 3.5.0.
2. Remove all previously added DigitalPersona Administrative Template files (.adm) from the GPO and add the new DigitalPersonaPro.adm file.
3. **If Pro workstation software is installed on any Windows NT or Windows 98 systems, a second .adm file must be used** to configure the NETLOGON share of the domain controller:
DigitalPersonaProWks98-NT.adm
4. Notify users to decrypt any files encrypted with One Touch Crypto
5. Convert any existing OTS templates using the OTS Administration Tool
6. Upgrade all existing Pro Workstation to 3.5.0
7. Deploy additional Pro Workstation 3.5.0

If your current version is:

Pro Server versions	3.2.0
Pro Workstation versions	3.4.0, 3.2.2, 3.2.1, 3.2.0

Data Migration Note:

Pro User and Computer Policies: Pro 3.5.0 introduces changes in the administration of these policies; these changes are explained at the end of this document (see **Extended Server Policy Module**).

One Touch SignOn (OTS) Templates: All existing OTS templates will continue to work after upgrading to Pro Server and Pro Workstation 3.5.0.

Web site One Touch Internet (OTI) logon screens: All existing web site OTI logon screens will continue to work after upgrading to Pro Server and Pro Workstation 3.5.0.

Win32 OTI Logon screens: All existing Win32 application OTI logon screens setup by end-users will continue to work after upgrading to Pro Server and Pro Workstation 3.5.0.

Software Upgrade Requirements:

1. Run the AD Domain Configuration Wizard.
(Double-click *DPDomainConfig.exe*, which is located in the AD Domain Configuration folder on the Server installation CD)
2. Upgrade existing Pro Servers to Pro Server 3.4.0.
3. Remove all previously added DigitalPersona Administrative Template files (.adm) from the GPO and add the new DigitalPersonaPro.adm file.
4. **If Pro workstation software is installed on any Windows NT or Windows 98 systems, a second .adm file must be used** to configure the NETLOGON share of the domain controller:
DigitalPersonaProWks98-NT.adm
5. Upgrade all existing Pro Workstation to 3.4.0
6. Deploy additional Pro Workstation 3.4.0

If your current version is:

Pro Server versions	3.2.0
Pro Workstation versions	3.1.0, 3.0.2, 3.0.1, 3.0.0, 2.1.4, 2.1.2*, 2.1.1

Data Migration Note:

Pro User and Computer Policies: Pro 3.5.0 introduces changes in the administration of these policies; these changes are explained at the end of this document (see **Extended Server Policy Module**).

One Touch SignOn (OTS) Templates: Existing OTS templates need to be converted to work with Pro Workstation 3.5.0 (see **Converting OTS Templates** at the end of this document).

Web site One Touch Internet (OTI) logon screens: All existing web site OTI logon screens will continue to work after upgrading to Pro Server and Pro Workstation 3.5.0.

Win32 OTI Logon screens: All existing Win32 application OTI logon screens setup by end-users need to be converted or recreated after upgrading to Pro Workstation 3.5.0 (see **Converting Win32 OTI Logon Screens** at the end of this document).

One Touch Crypto (OTC): This application is not provided in Pro 3.5.0. All files encrypted with OTC must be unencrypted before uninstalling or upgrading prior versions of Pro Workstation software.

***Pro Workstation 2.1.2:** all existing application logon screens setup by end-users need to be recreated with OTI after upgrading to Pro 3.5.0

Software Upgrade Requirements:

1. Run the AD Domain Configuration Wizard.
(Double-click *DPDomainConfig.exe*, which is located in the AD Domain Configuration folder on the Server installation CD)
2. Upgrade existing Pro Servers to Pro Server 3.5.0.
3. Remove all previously added DigitalPersona Administrative Template files (.adm) from the GPO and add the new DigitalPersonaPro.adm file.
4. **If Pro workstation software is installed on any Windows NT or Windows 98 systems, a second .adm file must be used** to configure the NETLOGON share of the domain controller:
DigitalPersonaProWks98-NT.adm
5. Notify users to decrypt any files encrypted with One Touch Crypto
6. Convert any existing OTS templates using the OTS Administration Tool
7. Upgrade all existing Pro Workstation to 3.5.0
8. Deploy additional Pro Workstation 3.5.0

If your current version is:

Pro Server versions	3.1.0, 3.0.1
Pro Workstation versions	3.4.0, 3.2.2, 3.2.1, 3.2.0

Data Migration Note:

One Touch SignOn (OTS) Templates: All existing OTS templates will continue to work after upgrading to Pro Server and Pro Workstation 3.5.0.

Web site One Touch Internet (OTI) logon screens: All existing web site OTI logon screens will continue to work after upgrading to Pro Server and Pro Workstation 3.5.0.

Win32 OTI Logon screens: All existing Win32 application OTI logon screens setup by end-users will continue to work after upgrading to Pro Server and Pro Workstation 3.5.0

Software Upgrade Requirements:

1. Run the AD Domain Configuration Wizard.
(Double-click *DPDomainConfig.exe*, which is located in the AD Domain Configuration folder)
2. Upgrade existing Pro Servers to Pro Server 3.5.0
3. Remove all previously added DigitalPersona Administrative Template files (.adm) from the GPO and add the new DigitalPersonaPro.adm file
4. **If Pro workstation software is installed on any Windows NT or Windows 98 systems, a second .adm file must be used** to configure the NETLOGON share of domain controller:
DigitalPersonaProWks98-NT.adm
5. Upgrade all existing Pro Workstation to 3.5.0
6. Deploy additional Pro Workstation 3.5.0

If your current version is:

Pro Server versions	3.1.0
Pro Workstation versions	3.1.0, 3.0.2, 3.0.1, 3.0.0

Data Migration Note:

One Touch SignOn (OTS) Templates: Existing OTS templates need to be converted to work with Pro Workstation 3.5.0 (see **Converting OTS Templates** at the end of this document)

Web site One Touch Internet (OTI) logon screens: All existing web site OTI logon screens will continue to work after upgrading to Pro Server 3.5.0 and Pro Workstation 3.5.0.

Win32 OTI Logon screens: All existing Win32 application OTI logon screens setup by end-users need to be converted or recreated after upgrading to Pro Server and Pro Workstation 3.5.0 (see **Converting Win32 OTI Logon Screens** at the end of this document).

One Touch Crypto (OTC): This application is not provided in Pro 3.5.0. All files encrypted with OTC must be unencrypted before uninstalling or upgrading prior versions of Pro Workstation software.

Software Upgrade Requirements:

1. Run the AD Domain Configuration Wizard.
(Double-click *DPDomainConfig.exe*, which is located in the AD Domain Configuration folder)
2. Upgrade existing Pro Servers to Pro Server 3.5.0
3. Remove all previously added DigitalPersona Administrative Template files (.adm) from the GPO and add the new DigitalPersonaPro.adm file.
4. **If Pro workstation software is installed on any Windows NT or Windows 98 systems, a second .adm file must be used** to configure the NETLOGON share of domain controller:
DigitalPersonaProWks98-NT.adm
5. Notify users to decrypt any files encrypted with One Touch Crypto
6. Convert any existing OTS templates using the OTS Administration Tool
7. Upgrade all existing Pro Workstation to 3.5.0
8. Deploy additional Pro Workstation 3.5.0

If your current version is:

Pro Server versions	3.0.1
Pro Workstation versions	3.1.0, 3.0.2, 3.0.1, 3.0.0, 2.1.4, 2.1.2*, 2.1.1

Data Migration Note:

One Touch SignOn (OTS) Templates: Existing OTS templates need to be converted to work with Pro Workstation 3.5.0 (see **Converting OTS Templates** at the end of this document)
Web site One Touch Internet (OTI) logon screens: All existing web site OTI logon screens will continue to work after upgrading to Pro Server and Pro Workstation 3.5.0.
Win32 OTI Logon screens: All existing Win32 application OTI logon screens setup by end-users need to be converted or recreated after upgrading to Pro Server and Pro Workstation 3.5.0 (see **Converting Win32 OTI Logon Screens** at the end of this document).
One Touch Crypto: This application is not provided in Pro 3.5.0. All files encrypted with OTC must be unencrypted before uninstalling or upgrading prior versions of Pro Workstation software.
***Pro Workstation 2.1.2:** all existing application logon screens setup by end-users need to be recreated with OTI after upgrading to Pro 3.5.0

Software Upgrade Requirements:

1. Run the AD Domain Configuration Wizard.
(Double-click *DPDomainConfig.exe*, which is located in the AD Domain Configuration folder)
2. Upgrade existing Pro Servers to Pro Server 3.5.0
3. Remove all previously added DigitalPersona Administrative Template files (.adm) from the GPO and add the new DigitalPersonaPro.adm file.
4. **If Pro workstation software is installed on any Windows NT or Windows 98 systems, a second .adm file must be used** to configure the NETLOGON share of domain controller:
DigitalPersonaProWks98-NT.adm
5. Run the Server Utility (*DPDataConversion.exe*) on all domain controllers running Pro Server to make the DP database compatible with Pro Workstations 3.5.0
6. Notify users to decrypt any files encrypted with One Touch Crypto
7. Convert any existing OTS templates using the OTS Administration Tool
8. Upgrade all existing Pro Workstation to 3.5.0
9. Deploy additional Pro Workstation 3.5.0

If your current version is:

Pro Server versions	3.0.1
Pro Workstation versions	2.0.1

Data Migration Note:

Cached fingerprint data: Un-installation of Pro Workstation software will remove cached fingerprint data for domain user accounts and fingerprint data for local users. All server data is retained.
One Touch Internet (OTI) logon screens: Un-installation of Pro Workstation software will remove all OTI logon screens. Users must recreate each OTI logon screen.
One Touch Crypto (OTC): This application is not provided in Pro 3.5.0. All files encrypted with OTC must be unencrypted before uninstalling or upgrading prior versions of Pro Workstation software.

Software Upgrade Requirements:

1. Run the AD Domain Configuration Wizard.
(Double-click *DPDomainConfig.exe*, which is located in the AD Domain Configuration folder)
2. Upgrade existing Pro Servers to Pro Server 3.5.0
3. Remove all previously added DigitalPersona Administrative Template files (.adm) from the GPO and add the new DigitalPersonaPro.adm file.
4. **If Pro workstation software is installed on any Windows NT or Windows 98 systems, a second .adm file must be used** to configure the NETLOGON share of domain controller:
DigitalPersonaProWks98-NT.adm
5. Run the Server Utility (*DPDataConversion.exe*) on all domain controllers running Pro Server to make the DP database compatible with Pro Workstations 3.5.0
6. Notify users to decrypt any files encrypted with One Touch Crypto
7. Uninstall existing Pro Workstation software; install Pro Workstation 3.5.0
8. Deploy additional Pro Workstation 3.5.0

Please contact Digital Persona Technical Support at techsupport@digitalpersona.com for additional assistance in planning your migration to Pro Server and Pro Workstation 3.5.0

=====

Support for previous revisions:

Effective February 2005, readers shipping with DigitalPersona Pro for Active Directory software products require support from:

Pro Server for Active Directory v3.1.0 or higher

and

Pro Workstation for Active Directory v3.2.0 or higher

Customers deploying U.are.U® 4000B model readers into existing Pro Server installations, must first upgrade their Server software to v 3.1.0 or higher and Workstation software to v3.2.0 or higher.

Digital Persona Technical Support is available for the previous two (major/minor) software releases. To be eligible for technical support and to ensure optimal software upgradeability (without un-installation) to future releases, we recommend that all versions of Pro software prior to version 3.4.0 be upgraded.

Upgrading your Pro Installation:

Please contact sales@digitalpersona.com for information & pricing to upgrade your Pro installation.

Maintenance & Support Plans:

Please contact sales@digitalpersona.com for details and pricing for our Maintenance & Support plans.

NOTE FOR INSTALLATIONS WITH MORE THAN ONE PRO SERVER

Our recommendation for customers, who have more than one Pro Server in their installation, is that all servers be upgraded to Pro Server 3.5.0 at the same time.

If this is not feasible, Pro software will support an environment in which more than one version of Pro Server software is installed. In this scenario:

Upgrade one or more Pro Servers to Pro Server 3.5.0

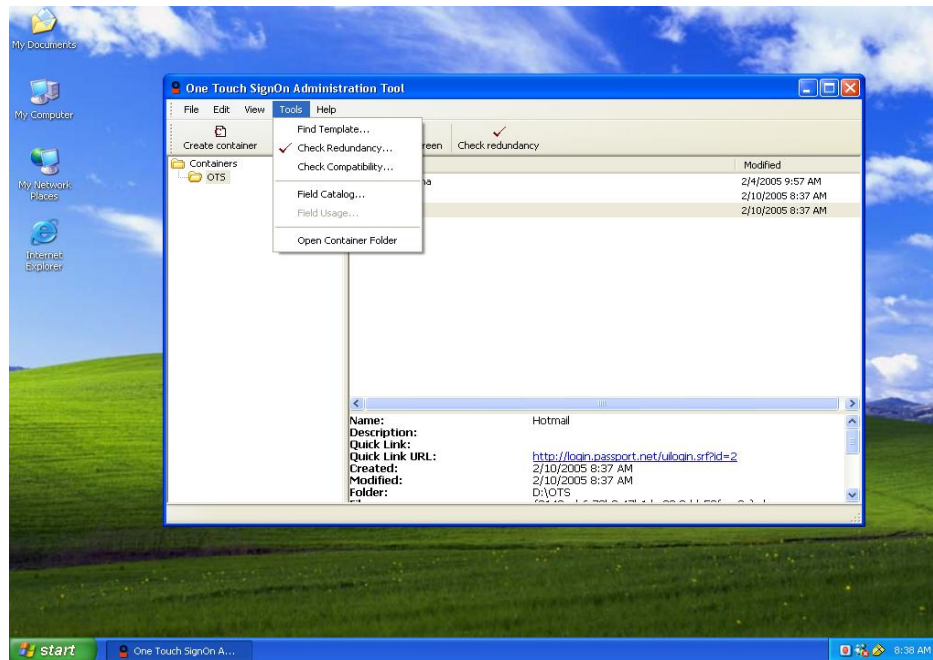
Before installing (or upgrading existing Pro Workstation software) Pro Workstation 3.5.0, you must run the Server Utility (*DPDataConversion.exe*) on the remaining domain controllers running Pro Server 3.0.1 or earlier to make the DP database compatible with Pro Workstations 3.5.0.

Install or upgrade existing Pro Workstation software to Pro 3.5.0

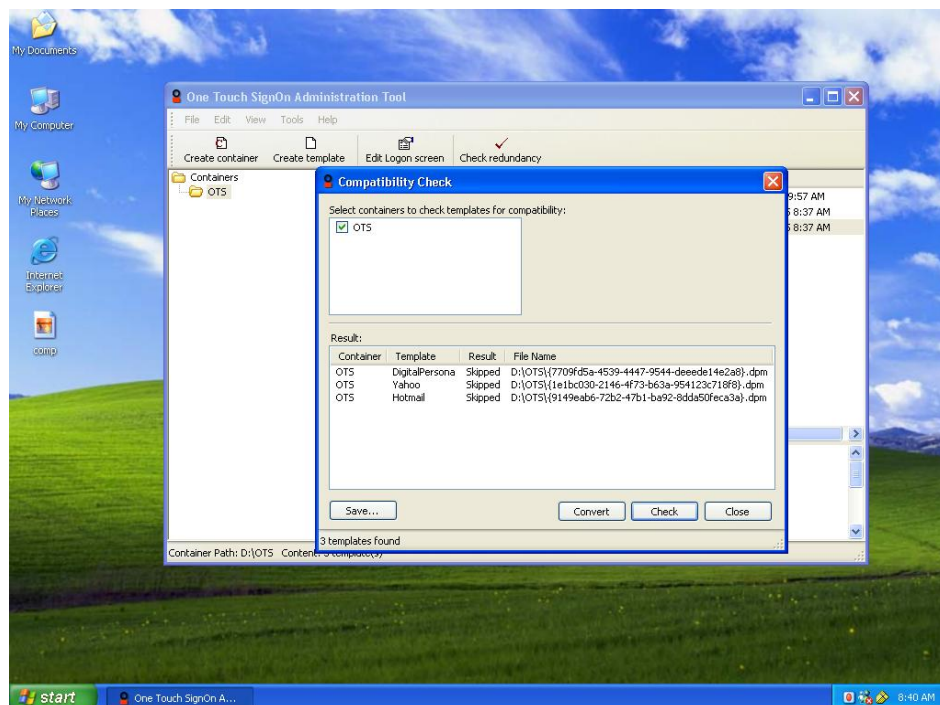
Upgrade the remaining Pro Servers per your upgrade plan.

Converting OTS Templates

1. Open the OTS Administration Tool.
2. Go to Tools menu and click on Check Compatibility



3. In the Check Compatibility window click on the Save button if you want to keep a backup of your current OTS templates before converting them.
4. Click on the Convert button to convert all OTS templates. The conversion utility will convert the templates and automatically save them in their current location.
5. Click on the Close button to close the Compatibility window.
6. Restart your workstation to automatically download the converted templates to your system.

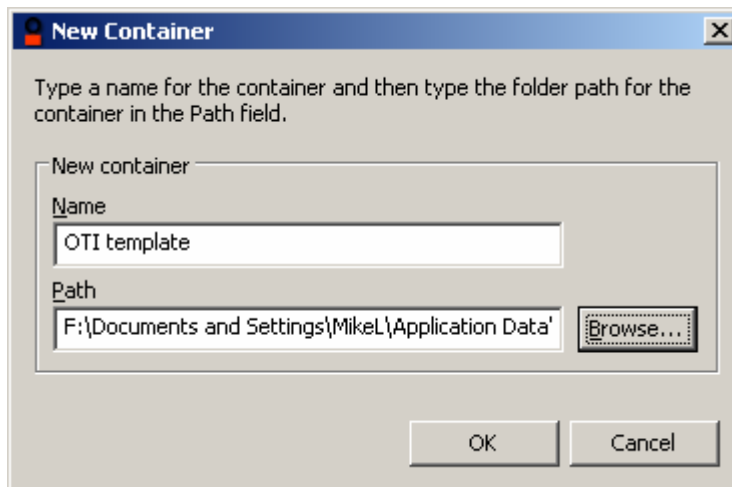
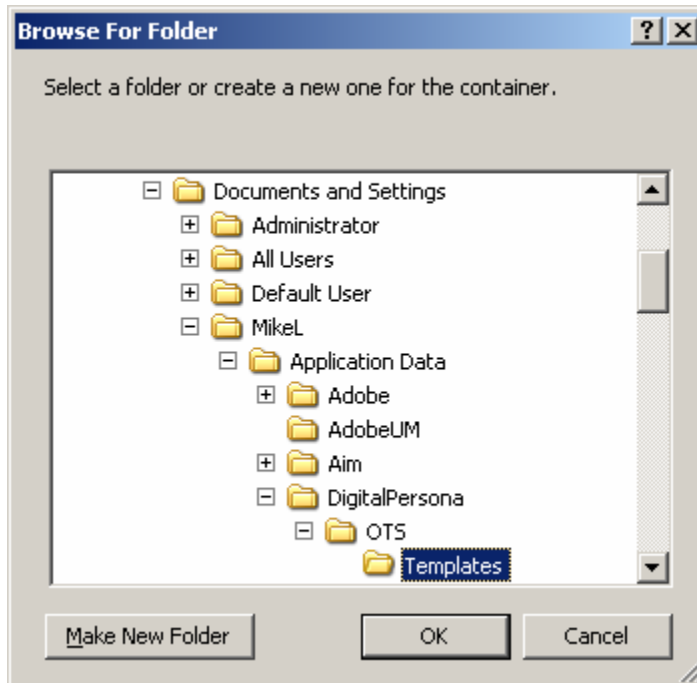


Converting Win32 OTI Logon Screens

1. Install the OTS Administration Tool from the Pro Workstation 3.5.0 CD
2. Start the Tool by going to Start-> DigitalPersona Pro-> OTS Administration Tools
3. Create a new container that contains the path to the location where OTI templates are located. The OTI templates you created are located in a hidden folder in your user profiles folder; this folder is located at:

C:\Documents and Settings\Your Username\Application Data\DigitalPersona\OTS\Templates.

- a. Make sure all folders are not hidden (go to Explorer's Tools->Folder Options)
- b. Create a new container and use the browse button to set the path to YOUR USERNAME location (see screenshots):



4. From the OTS Admin Tools, go to Tools-> Check Compatibility, then select the container that you created in step #3. Click on the "Check" button. The Tool will check for all templates in this container.

5. Click on the "Convert" button; all templates that need to be converted will be converted.

These templates can now be used with Pro Workstation 3.5.0; simply go to the Application logon page and login with your registered finger.

Extended Server Policy Module

In Pro 3.5 the User and Computer Policies have been divided into two separate groups, Basic and Extended. All of these policies were previously included with the Pro Server Software (v3.2 – 3.4). The version 3.5 release of Pro Server includes the three Basic User Policies. The Extended Server Policy Module contains all five User Policies and is available as a standalone module from Digital Persona and its authorized Partners. The following table identifies which policies are contained in the Pro Server v3.5.0 software (Basic) and in the Extended Server Policy Module:

3.4 User Policy text	3.5 User Policy text	Location of Policy
User cannot use fingerprints to log on to Windows	User provides only Windows credentials to log on	Basic and Extended
User must provide a fingerprint to log on.	User must provide a fingerprint to log on	Extended
PIN is required when a fingerprint is provided	User must type a PIN when providing a fingerprint to log on	Extended
Password is not allowed for logon	Randomize user's Windows password	Basic and Extended
Account is locked out from use of fingerprint credentials	Account is locked out from use of fingerprint credentials	Basic and Extended

Customers who have been using either of the two Extended Policies (shown in red) in Pro Server 3.4 or a prior version of Pro Server should contact sales@digitalpersona.com to request pricing for the Extended Server Policy Module.