

DigitalPersona® Pro Workstation 3.5.0 Upgrade Notes

Adding Pro Workstation 3.5.0 To An Existing Pro Server*/Workstation Installation (*Pro Server 3.4.0 to Pro Server 2.1.2)

IMPORTANT UPGRADE RECOMMENDATIONS

While we strive to ensure safe and trouble-free system upgrades, we cannot guarantee performance in every IT environment. It is therefore strongly recommend that you carefully plan and perform reasonable precautions before any system upgrade:

- Review the Readme.txt file on both the DigitalPersona Pro Workstation and Server CD.
- Review the Administrator Guide and identify potential changes to the system administration settings.
- Perform a lab test of the upgrade that simulates your particular IT environment.
- Incrementally deploy and test your system upgrade (i.e., Pro Server then Pro Workstation).
- Prepare a software rollback plan to reverse any potential problems. Note that rollback to a previous release will require un-installation of a later revision of software.

Adding Pro Workstation 3.5.0 To An Existing Pro Server*/Workstation Installation (*Pro Server 3.4.0 to Pro Server 2.1.2)

To add DigitalPersona Pro Workstation 3.5.0 to your existing Pro Server/Workstation installation:

These are the MINIMUM recommended changes to add Pro 3.5.0 Workstation to an existing Pro deployment. **Please Note:** For the latest capabilities, feature consistency, and improved availability, we recommend a system wide (Server and Workstation) software upgrade to Pro Server and Workstation v3.5.0.

If you have deployed Pro software in a Windows Server 2003 environment, please read the following notice, before installing Windows Server 2003 Service Pack 1:

<http://www.digitalpersona.com/support/referenceMat/windows2003SP1Notice.html>

If your current version is one of the following:

Pro Server versions	3.4.0
Pro Workstation versions	3.4.0, 3.2.2, 3.2.1, 3.2.0, 3.1.0, 3.0 2, 3.0 1, 3.0 0, 2.1.4, 2.1.2, 2.1.1

Minimum Software Upgrade Requirements:

1. No changes need to be made to your existing software installation; you can install additional Pro Workstations 3.5.0 in your deployment

If your current version is one of the following:

Pro Server versions	3.3.1/3.3.2, 3.3.0, 3.2.0, 3.1.0, 3.0.1, 3.0.0, 2.1.4, 2.1.2
Pro Workstation versions	3.2.2, 3.2.1, 3.2.0

Minimum Software Upgrade Requirements:

1. No changes need to be made to your existing software installation; you can install additional Pro Workstations 3.5.0 in your deployment

If your current version is one of the following:

Pro Server versions	3.3.1/3.3.2, 3.3.0, 3.2.0
Pro Workstation versions	3.1.0, 3.0.2, 3.0.1, 3.0.0, 2.1.4, 2.1.2, and 2.1.1

Data Migration Note:

One Touch SignOn (OTS) Templates: Existing OTS templates need to be converted to work with Pro Workstation 3.5.0 (see **Converting OTS Templates** at the end of this document).

Web site One Touch Internet (OTI) Logon screens: All existing web site OTI logon screens will continue to work after upgrading to Pro Workstation 3.5.0

Win32 OTI Logon screens: All existing Win32 application OTI logon screens setup by end-users need to be converted (see **Converting Win32 OTI Logon Screens** at the end of this document) or recreated after upgrading to Pro Workstation 3.5.0.

One Touch Crypto (OTC): This application is not provided in Pro Workstation 3.4.0; Pro Workstation 3.5.0 users will not be able to encrypt/un-encrypt files. Users running Pro Workstation 3.1 or earlier will be able to continue using OTC.

Minimum Software Upgrade Requirements:

1. Create a new folder to store OTS templates for version 3.5 users.
2. Copy the old OTS templates in the new folder.
3. Create a new container in OTS Administration Tool and point it to the new OTS folder.
4. Convert the templates in the new folder/container using the Pro 3.5.0 OTS Administration tool.
5. Place users of old (version 3.4 and earlier) and new (version 3.5 only) Pro Workstation software to different OUs.
6. Change the GPO for OTS in both OUs and point the OTS folder location accordingly.

If your current version is one of the following:

Pro Server versions	3.1.0
Pro Workstation versions	3.1.0, 3.0.2, 3.0.1, 3.0.0

Data Migration Note:

One Touch SignOn (OTS) Templates: Existing OTS templates need to be converted to work with Pro Workstation 3.5.0 (see **Converting OTS Templates** at the end of this document).

Web site One Touch Internet (OTI) Logon screens: All existing web site OTI logon screens will continue to work after upgrading to Pro Workstation 3.5.0

Win32 OTI Logon screens: All existing Win32 application OTI logon screens setup by end-users need to be converted (see **Converting Win32 OTI Logon Screens** at the end of this document) or recreated after upgrading to Pro Workstation 3.5.0.

One Touch Crypto (OTC): This application is not provided in Pro Workstation 3.5. Pro Workstation 3.5.0 users will not be able to encrypt/un-encrypt files. Users running Pro Workstation 3.1 or earlier will be able to continue using OTC.

Minimum Software Upgrade Requirements:

1. Create a new folder to store OTS templates for version 3.5 users.
2. Copy the old OTS templates in the new folder.
3. Create a new container in OTS Administration Tool and point it to the new OTS folder.
4. Convert the templates in the new folder/container using the Pro 3.5.0 OTS Administration tool.
5. Place users of old (version 3.4 and earlier) and new (version 3.5 only) Pro Workstation software to different OUs.
6. Change the GPO for OTS in both OUs and point the OTS folder location accordingly.

if your current version is one of the following:

Pro Server versions	3.0.1, 3.0.0, 2.1.4, 2.1.2
Pro Workstation versions	3.1.0, 3.0.2, 3.0.1, 3.0.0, 2.1.4, 2.1.1

Data Migration Note:

One Touch SignOn (OTS) Templates: Existing OTS templates need to be converted to work with Pro Workstation 3.5.0 (see **Converting OTS Templates** at the end of this document.)

Web site One Touch Internet (OTI) Logon screens: All existing web site OTI logon screens will continue to work after upgrading to Pro Workstation 3.5.0

Win32 OTI Logon screens: All existing Win32 application OTI logon screens setup by end-users need to be converted (see **Converting Win32 OTI Logon Screens** below) or recreated after upgrading to Pro Workstation 3.5.0.

One Touch Crypto (OTC): This application is not provided in Pro Workstation 3.5; Pro Workstation 3.5.0 users will not be able to encrypt/un-encrypt files. Users running Pro Workstation 3.1 or earlier will be able to continue using OTC.

Minimum Software Upgrade Requirements:

1. Run the Server Utility (*DPDataConversion.exe*) on all domain controllers running Pro Server to make the DP database compatible with Pro Workstations 3.5.0.
2. Install Pro Workstation 3.5.0 in your deployment.
3. Create a new folder to store OTS templates for version 3.5 users.
4. Copy the old OTS templates in the new folder.
5. Create a new container in OTS Administration Tool and point it to the new OTS folder.
6. Convert the templates in the new folder/container using the Pro 3.5.0 OTS Administration tool.
7. Place users of old (version 3.4 and earlier) and new (version 3.5 only) Pro Workstation software to different OUs.
8. Change the GPO for OTS in both OUs and point the OTS folder location accordingly.

if your current version is one of the following:

Pro Server versions	3.0.1, 3.0.0, 2.1.4
Pro Workstation versions	2.1.2

Data Migration Note:

One Touch Crypto (OTC): This application is not provided in Pro Workstation 3.4; Pro Workstation 3.5.0 users will not be able to encrypt/un-encrypt files. Users running Pro Workstation 3.1 or earlier will be able to continue using OTC.

Minimum Software Upgrade Requirements:

1. Run the Server Utility (*DPDataConversion.exe*) on all domain controllers running Pro Server to make the DP database compatible with Pro Workstations 3.5.0.
2. Install Pro Workstation 3.5.0 in your deployment.

if your current version is one of the following:

Pro Server versions	3.0.1, 3.0.0
Pro Workstation versions	2.0.1, 2.0.0

Data Migration Note:

One Touch Crypto (OTC): This application is not provided in Pro Workstation 3.5; Pro Workstation 3.5.0 users will not be able to encrypt/un-encrypt files. Users running Pro Workstation 3.1 or earlier will be able to continue using OTC.

Minimum Software Upgrade Requirements:

1. Run the Server Utility (*DPDataConversion.exe*) on all domain controllers running Pro Server to make the DP database compatible with Pro Workstations 3.5.0
2. Install additional Pro Workstation 3.5.0 in your deployment.

If your current version is one of the following:

Pro Server versions	2.1.2
Pro Workstation versions	2.1.2, 2.0.1, 2.0.0, 1.0.1, 1.0.0

Data Migration Note:

One Touch Crypto: This application is not provided in Pro Workstation 3.5; Pro Workstation 3.5.0 users will not be able to encrypt/un-encrypt files. Users running Pro Workstation 3.1 or earlier will be able to continue using OTC.

Minimum Software Upgrade Requirements:

1. Run the Server Utility (*DPDataConversion.exe*) on all domain controllers running Pro Server to make the DP database compatible with Pro Workstations 3.5.0.
2. Install additional Pro Workstation 3.5.0 in your deployment

Please contact Digital Persona Technical Support at techsupport@digitalpersona.com for additional assistance in planning your migration to Pro 3.5.0

=====

Support for previous revisions:

Effective February 2005, readers shipping with DigitalPersona Pro for Active Directory software products require support from:

Pro Server for Active Directory v3.1.0 or higher
and
Pro Workstation for Active Directory v3.2.0 or higher

Customers deploying U.are.U® 4000B model readers into existing Pro Server installations, must first upgrade their Server software to v 3.1.0 or higher and Workstation software to v3.2.0 or higher.

Digital Persona Technical Support is available for the previous two (major/minor) software releases. To be eligible for technical support and to ensure optimal software upgradeability (without un-installation) to future releases, we recommend that all versions of Pro software prior to version 3.4.0 be upgraded.

Upgrading your Pro Installation:

Please contact sales@digitalpersona.com for information & pricing to upgrade your Pro installation.

Maintenance & Support Plans:

Please contact sales@digitalpersona.com for details and pricing for our Maintenance & Support plans.

NOTE FOR INSTALLATIONS WITH MORE THAN ONE PRO SERVER

Our recommendation for customers, who have more than one Pro Server in their installation, is that all servers be upgraded to Pro Server 3.5.0 at the same time.

If this is not feasible, Pro software will support an environment in which more than one version of Pro Server software is installed. In this scenario:

Upgrade one or more Pro Servers to Pro Server 3.5.0

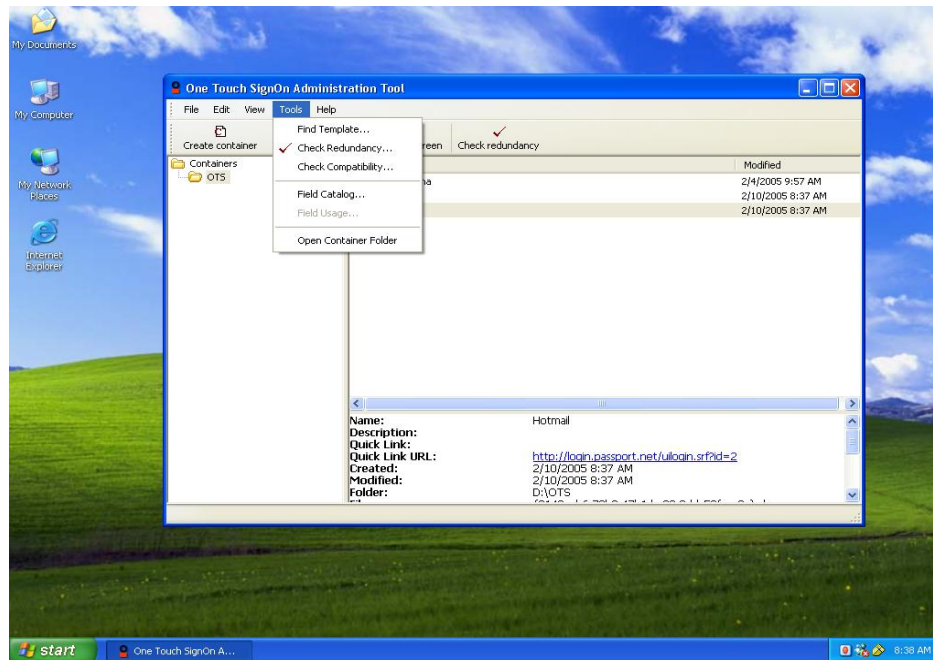
Before installing (or upgrading existing Pro Workstation software) Pro Workstation 3.5.0, you must run the Server Utility (*DPDataConversion.exe*) on the remaining domain controllers running Pro Server 3.0.1 or earlier to make the DP database compatible with Pro Workstations 3.5.0.

Install or upgrade existing Pro Workstation software to Pro 3.5.0

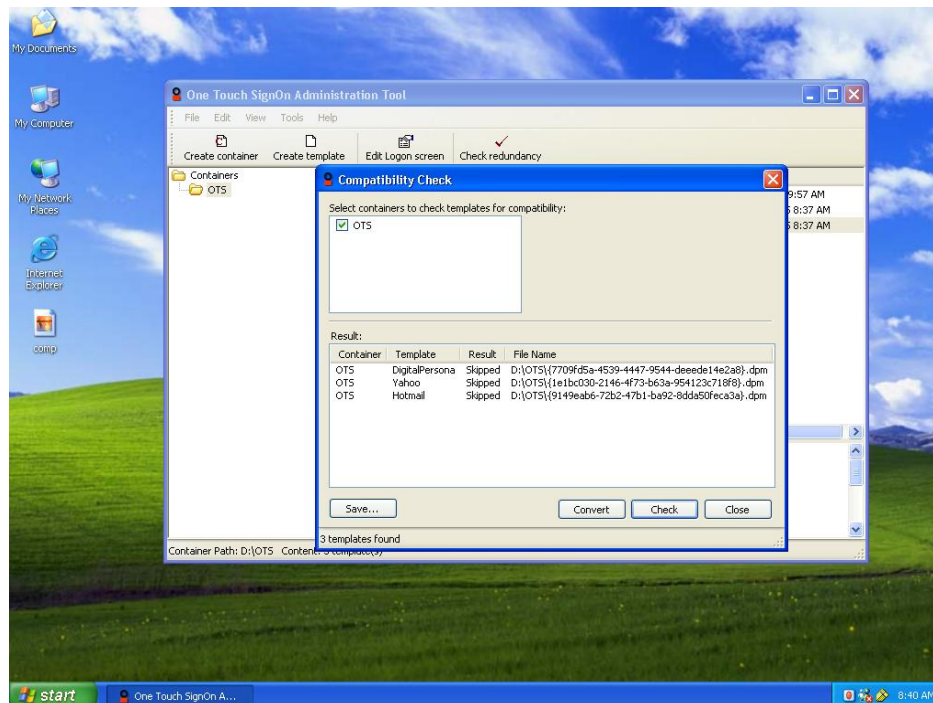
Upgrade the remaining Pro Servers per your upgrade plan.

Converting OTS Templates

1. Open the OTS Administration Tool.
2. Go to Tools menu and click on Check Compatibility



3. In the Check Compatibility window click on the Save button if you want to keep a backup of your current OTS templates before converting them.
4. Click on the Convert button to convert all OTS templates. The conversion utility will convert the templates and automatically save them in their current location.
5. Click on the Close button to close the Compatibility window.
6. Restart your workstation to automatically download the converted templates to your system.

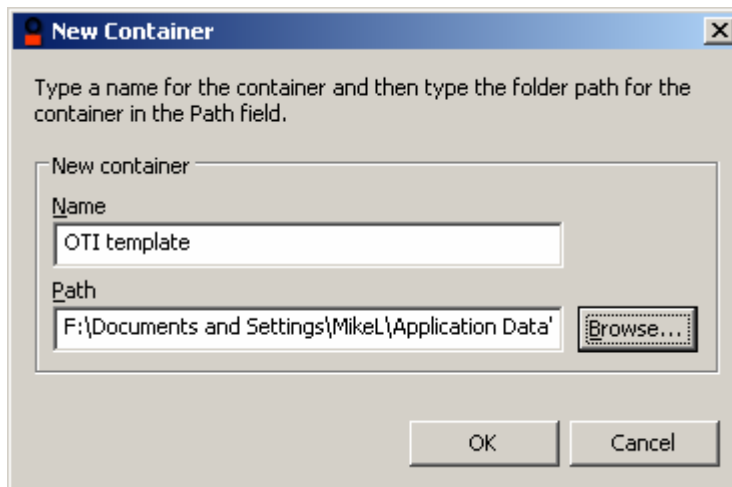
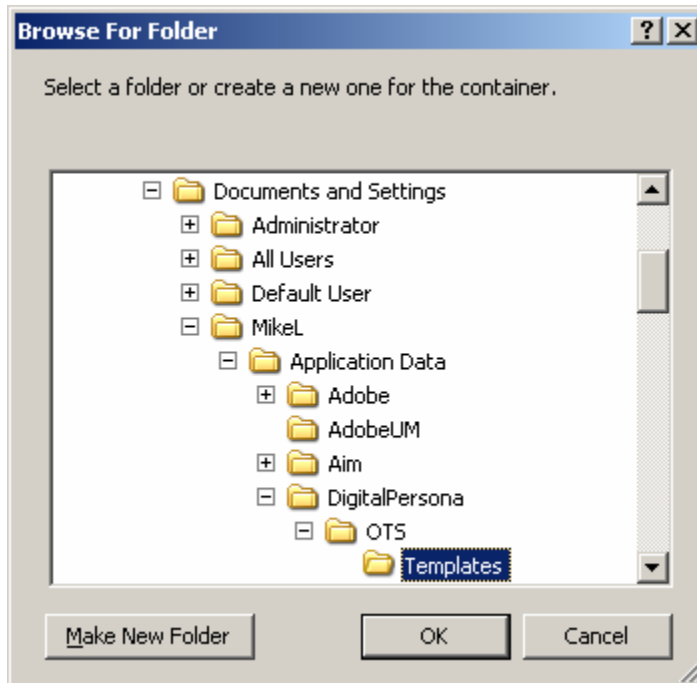


Converting Win32 OTI Logon Screens

1. Install the OTS Administration Tool from the Pro Workstation 3.5.0 CD
2. Start the Tool by going to Start-> DigitalPersona Pro-> OTS Administration Tools
3. Create a new container that contains the path to the location where OTI templates are located. The OTI templates you created are located in a hidden folder in your user profiles folder; this folder is located at:

C:\Documents and Settings\Your Username\Application Data\DigitalPersona\OTS\Templates.

- a. Make sure all folders are not hidden (go to Explorer's Tools->Folder Options)
- b. Create a new container and use the browse button to set the path to YOUR USERNAME location (see screenshots):



4. From the OTS Admin Tools, go to Tools-> Check Compatibility, then select the container that you created in step #3. Click on the "Check" button. The Tool will check for all templates in this container.
5. Click on the "Convert" button; all templates that need to be converted will be converted.

These templates can now be used with Pro 3.5.0; simply go to the Application logon page and login with your registered finger.