

DigitalPersona® Pro Enterprise

Quick Start Guide



DATA PROTECTION • REMOTE ACCESS • SECURE COMMUNICATION • STRONG AUTHENTICATION • ACCESS RECOVERY • SINGLE SIGN-ON

Table of Contents

Feature Overview	3
Getting Started	4
System requirements	4
Server installation	5
Installing License Activation Manager	6
Workstation Installation	6
License activation	7
Activation through Active Directory	7
Activation on the local workstation	7
Policy Settings	7
Pro Workstation	8
Multi-factor logon to Windows	8
Workstation dashboard	8
Enrolling your credentials	10
Creating logons	11
Additional security applications	12
Drive Encryption	12
Privacy Manager	13
Workstation Administrative Console	14
Administration Tools	15
License Activation Manager	15
Users and Computers Snap-in	16
Attended Enrollment Tool	16
User Query Snap-in	17
Password Manager Pro	18
Creating managed logons	18
Deploying managed logons	19
DigitalPersona Defender VPN module	19
Event Logging and Auditing	20
Additional Resources	20

DigitalPersona® Pro Enterprise

DigitalPersona Pro Enterprise is the centrally-managed Endpoint Protection suite for Access Management, Data Protection and Secure Communications.

It allows companies to control and enforce multiple security applications through a single control point; and can provide solutions including Strong Authentication, Single Sign-On, Secure VPN access, Full Disk Encryption, Access Recovery, and Secure Email and Documents.

DigitalPersona Pro Enterprise provides convenient and secure central administration, easily scaling to over one hundred thousand users. The product is tightly integrated with Windows Active Directory and can be deployed without the need for professional services.

This Quick Start Guide provides an overview of the DigitalPersona Pro Enterprise solution and describes the major features of its components. Additional resources are listed at the end of this guide.

Note that procedures and screen images are from Microsoft Windows Vista. Actual steps and visual appearance may be slightly different on other versions of Windows.

Feature Overview

The DigitalPersona Pro Enterprise solution includes the following core components and features. (Some features are optional add-on modules)

- Pro Enterprise Server - is used to centrally configure and manage installations of DigitalPersona Pro Workstation and the HP ProtectTools suite preloaded on many Hewlett-Packard business notebooks and desktops. It is installed on a domain controller and is automatically connected to by installed clients.
- Pro Workstation - includes an end-user dashboard for local access to installed security applications and an Administrative Console where the local administrator can pre-configure applications for users of the computer. Use of the console can be disabled through a GPO setting in Active Directory.
- Credential Manager and Password Manager - are built-in core applications providing multi-factor authentication capabilities with Single SignOn to Windows, websites and programs.
- Drive Encryption for DigitalPersona Pro - provides the ability to encrypt any non-removable hard drives, ensuring data security in case of hardware loss or compromise.
- DigitalPersona Defender VPN module - Supports authentication to RADIUS-based VPNs using OATH-compliant One Time Password (OTP) tokens. To use hardware tokens or smartphone tokens, Defender can be used by itself without the Pro Enterprise client. For

generation of the OTP on the client, Password Manager Pro and a supported Pro Enterprise client are required. Additional information on this product is available from your DigitalPersona partner or on our website at <http://www.digitalpersona.com/enterprise>.

- Password Manager Pro - enables administrators to provide controlled access to network resources, programs and websites by adding any of a variety of authentication mechanisms (such as password, smart card, fingerprints or Defender-compatible VPN tokens) to their logon and change password screens.
- Privacy Manager Pro - is a centrally-managed secure communication solution enabling sensitive documents and communication to remain private, secure and unaltered wherever they are transmitted or stored. Privacy Manager allows you to digitally sign and encrypt Microsoft® Outlook email and Office documents with the touch of a finger or a password.
- Administration Tools - a set of programs and utilities for administrating and licensing DigitalPersona Pro Enterprise components and applications.

Make sure and check the DigitalPersona Pro website at <http://www.digitalpersona.com/enterprise> for additional applications that may be available.

Getting Started

System requirements

Minimum system requirements for installation of the DigitalPersona Pro Enterprise Server and Workstation are shown below.

Product/ Component	Minimum Requirements
DigitalPersona Pro Enterprise Server	Windows Server 2008/2003 (32/64-bit) or Windows SBS 2003 Active Directory 5K hard disk space per user

Product/ Component	Minimum Requirements
DigitalPersona Pro Workstation	<p>Windows Server 2008/2003 (32/64-bit) or Windows 7/Vista (32/64-bit) or Windows XP Professional (32/64-bit) or Windows XP Embedded (32-bit only)</p> <p>Home editions of Windows 7/Vista/XP are not supported.</p> <p>30 MB disk space, 60 MB during installation</p> <p>Microsoft Internet Explorer 6-9 or Firefox 2.0+ to create/use Password Manager <i>personal</i>* logons or use <i>managed</i>* logons</p> <p>Microsoft Internet Explorer 6-9 to create <i>managed</i>* logons using Password Manager <i>Pro</i></p>

* *Personal* logons allow end-users to create automated logon to programs, websites and network resources. *Managed* logons have the same function but are created by an administrator and deployed to end-users.

Server installation

Although the DigitalPersona Pro Workstation can be used as a standalone product without centralized management by a DigitalPersona Pro Enterprise Server, it is most commonly used in conjunction with the Enterprise Server.

The DigitalPersona Pro Enterprise Server should be installed prior to installing any instances of the Pro Workstation. Otherwise, domain users of Pro Workstation will need to enroll their credentials again and reenter any Password Manager logon data after the server is installed.

The following instructions indicate the simplest common installation scenario: installation on a domain controller running Windows 2008 Server.

The following must also be true.

- No other installations of DigitalPersona Pro Enterprise Server exists in the domain
- The Pro clients that will be used with the Enterprise Server are on the same domain
- Active Directory has been properly configured and tested on your network. Note that the installation will extend your Active Directory schema. Specific details on the schema extensions are available upon request from our Technical Support department.

To install the DigitalPersona Pro Enterprise Server -

- 1 Run the Active Directory Schema Extension wizard (DPSchemaExt.exe) in the “AD Schema Extension” folder of the Pro Enterprise Server software package. You must have Schema Administrator privileges. to run the Schema Extension Wizard.

The Active Directory Schema Extension Wizard must be run from the schema master domain controller, or the data may not replicate fast enough to allow the wizard to continue. If the data is not replicated fast enough, the wizard will terminate, and you should then wait one replication cycle before running the wizard again.

After the schema extension, and again after configuring your domains, you must wait for Active Directory schema replication to be completed. The amount of time this takes will depend on the complexity of your Active Directory structure.

- 2 Run the Active Directory Domain Configuration wizard by launching DPDomainConfig.exe in the “Domain Configuration” folder of the Pro Enterprise Server software package.
- 3 Run the Pro Enterprise Server Installation wizard by launching Setup.exe in the “Pro Enterprise Server” folder of the software package.

Installing License Activation Manager

The DigitalPersona Pro License Activation Manager is used to activate licenses for DigitalPersona Pro Enterprise Server and for Pro Enterprise 5.1 and above clients.

You may also select to install additional Administration Tools at this time. See page 15 for a brief description of the tools, or the Administration Tools topic in the DigitalPersona Pro Enterprise Administrator Guide for a more detailed description.

To install the License Activation Manager

- 1 Locate and launch the **setup.exe** located in the Pro Enterprise Server\Pro Administration Tools folder of the DigitalPersona Pro Enterprise product package.
- 2 Select **Complete** or **Custom** installation. To install *only* the License Activation Manager, select Custom and deselect all other administration tools.
- 3 Click **Next**, and then click **Install**. Follow the onscreen instructions.

Workstation Installation

To install DigitalPersona Pro Workstation for Enterprise -

- Run the Pro Workstation Installation wizard by launching Setup.exe in the “Pro Enterprise Workstation” folder of the software package.

License activation

If your network is a single Active Directory forest with multiple domains, DigitalPersona licenses should be applied at the domain level. The Pro Server (user-based) license is applied to the domain with users utilizing DigitalPersona software. Client and feature (computer-based) licenses are applied to the domain with computers where DigitalPersona Pro clients are installed.

Computer-based licenses can be activated through Active Directory or at the client workstation. Licenses may also be activated by proxy (see further details in the Administrator Guide.)

Prior to installing DigitalPersona Licenses, the Pro Server software must be installed, and the Pro License Activation Manager must be installed on the same domain controller.

Activation through Active Directory

- 1 Launch the Group Policy Management Editor, on the domain where your Pro Server is installed.
- 2 Go to Computer Configuration\Policies\Software Settings\DigitalPersona\Licenses.
- 3 Select which DigitalPersona Pro component you want to deploy licenses for. For example, Pro Enterprise Server, Pro Enterprise Workstation, etc.
- 4 Right-click and select **Add License**.
- 5 Type the product's License ID and Password.
- 6 Repeat for each component or licensed feature.

Activation on the local workstation

- 1 Client and feature license information may be entered during a local installation. The last step in the Installation wizard will prompt you for the Activation ID (or License ID), and password.
- 2 After installation, you may launch the Product Activation wizard from the client software About dialog.
- 3 When using unlicensed clients or when using separately-licensed features for the first time, the Product Activation wizard will be launched automatically.

Policy Settings

DigitalPersona Pro Enterprise provides complete centralized management of the Pro Enterprise Server and all managed client workstations through Active Directory Group Policy Object settings. Each setting includes a complete description of its purpose and use on the Explain tab. Additionally, a complete list and description of these settings, as well as an alphabetical listing, are available in the DigitalPersona Pro Enterprise Administrator Guide.

Pro Workstation

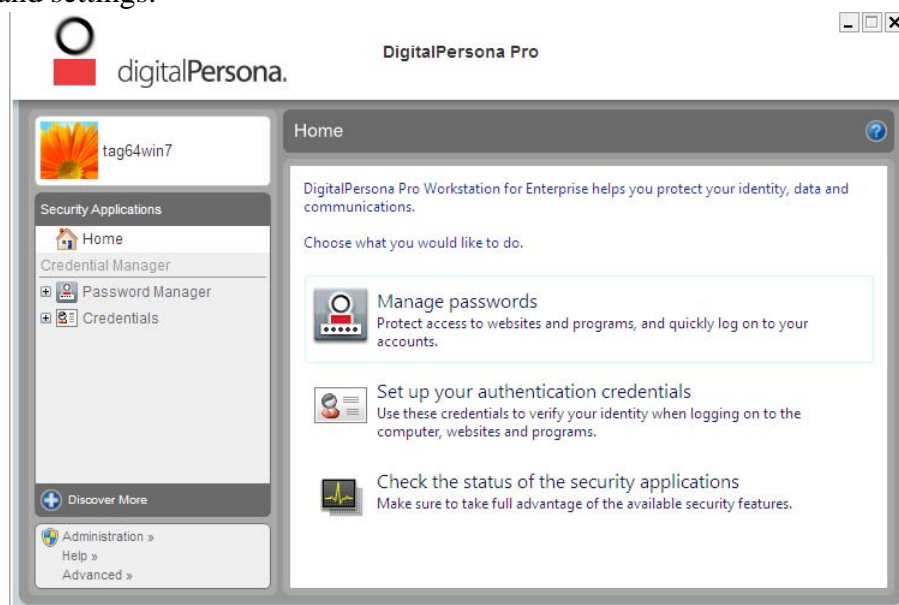
The DigitalPersona Pro Workstation is the client component of the DigitalPersona Pro Enterprise solution, providing centrally managed endpoint protection. It is generally used in an enterprise environment with DigitalPersona Pro Server, but can also be used separately from the Enterprise Server.

Multi-factor logon to Windows

DigitalPersona Pro Workstation adds administrator configured multi-factor authentication to the Windows logon experience, allowing the replacement of passwords with any combination of password and/or other credentials such as fingerprints, smart cards and facial recognition. The end-user is prompted for the required credentials according to the logon settings implemented by the administrator, and guided through the process of logging on to Windows without needing to know specific details of policy implementation.

Workstation dashboard

The Pro Workstation dashboard is the central location for easy access to Pro Workstation features, applications, and settings.



To open the dashboard

- Click **Start, All Programs, DigitalPersona, DigitalPersona Pro.**

Major features of the dashboard include:

- Credentials - Provides a means to enroll and modify credentials used to verify your identity.
- Password Manager - Allows the end-user to create automated *personal* logons to their favorite websites and programs, replacing their passwords with a single credential such as a fingerprint, smart card or facial recognition, or multi-factor authentication as defined by the administrator. Use can also be restricted to *managed* logons created by DigitalPersona Password Manager Pro.
- Backup and Restore - Allows you to back up or restore DigitalPersona Pro Workstation data.

Additional dashboard features, such as setting general workstation and device-specific preferences are described in the DigitalPersona Pro Enterprise Administrator Guide.

Enrolling your credentials

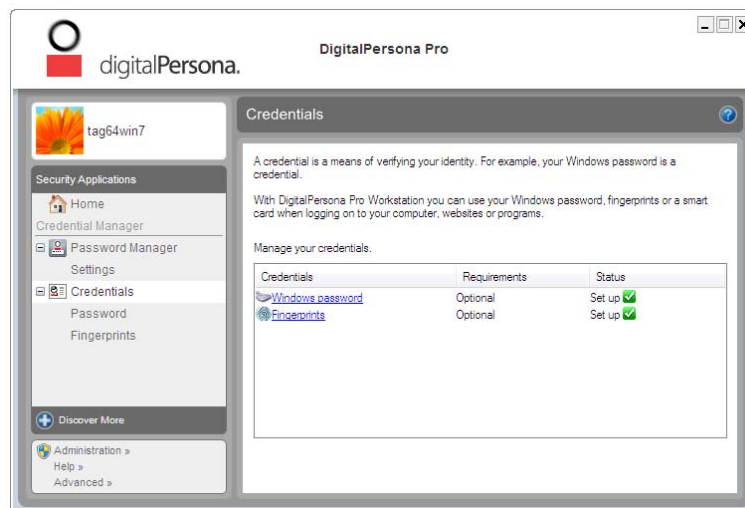
DigitalPersona Pro Workstation can use your current Windows password for authentication, or use multiple or alternate credentials specified by the administrator. Depending on a computer's hardware and software configuration, the following credentials may be available.

- Fingerprints
- Smart Card
- Facial recognition

Prior to using any of these credentials, they must be enrolled.

To enroll a credential

- 1 Open the DigitalPersona Pro dashboard.



- 2 Click **Credentials**.

- 3 Click the credential you want to enroll. Follow the onscreen instructions.

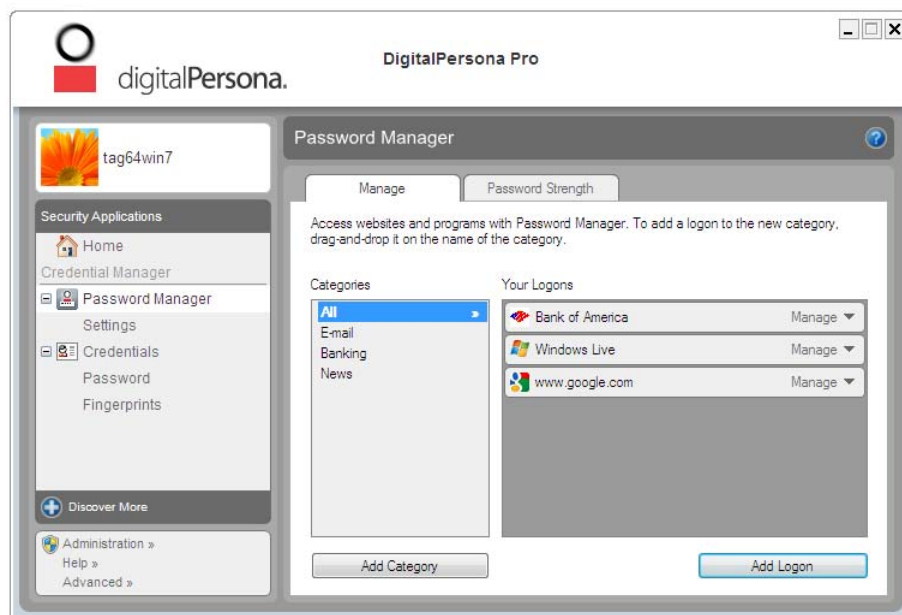
Creating logons

Using DigitalPersona Password Manager, a built-in security application, you can use your preferred credential to logon to websites and programs.

By creating *logons* for each site or program, you can then use a single password, fingerprint or other credential instead of having to remember (or write down!) dozens or hundreds of logon/password combinations.

To create a Password Manager logon

- 1 Launch the logon screen for a website or program.
- 2 Open the DigitalPersona Pro dashboard.



- 3 Click the Password Manager topic.
- 4 On the **Manage** tab, click **Add Logon**.
- 5 Enter your logon data.

For more information on the features of Password Manager, see the online help provided within the application and the DigitalPersona Pro Enterprise Administrator Guide located on our website at <http://www.digitalpersona.com/products/material>.

Additional security applications

Additional security applications may be downloaded from the DigitalPersona website, through the Pro Workstation dashboard. Applications currently available include -

Drive Encryption

Drive Encryption for DigitalPersona Pro provides complete data protection by encrypting your computer hard drive. When Drive Encryption is enabled, you must log in at the Drive Encryption login screen, which is displayed before the Windows® operating system starts up.

The DigitalPersona Drive Encryption application allows Windows administrators to activate Drive Encryption, back up or recover the encryption key, add and remove users, and deactivate Drive Encryption.

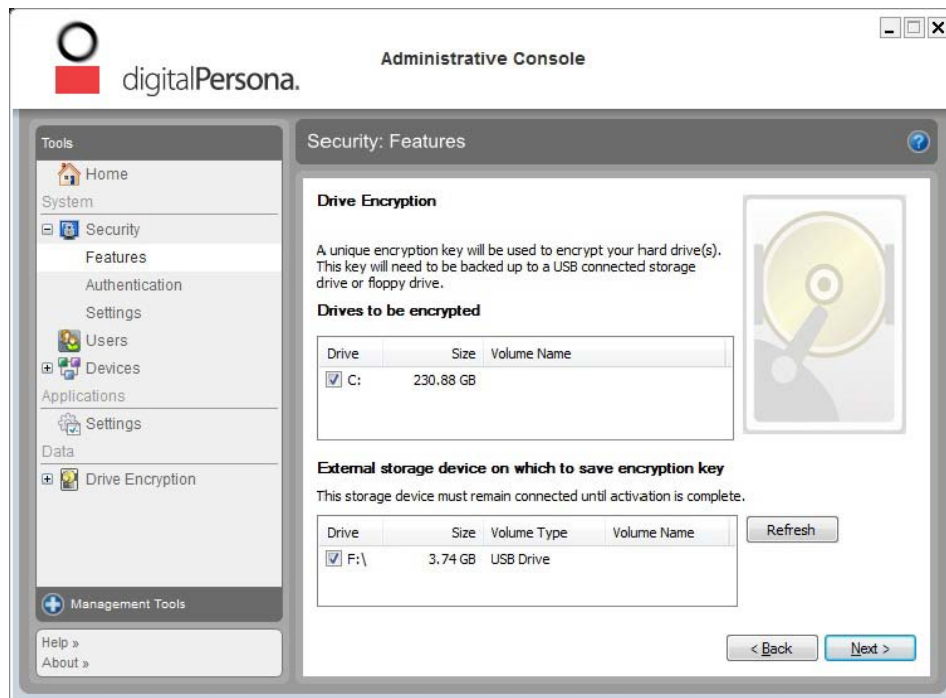
CAUTION: We strongly recommend verifying the health of a drive and backing up its data prior to encryption, using tools such as CHKDSK and third-party programs that read the disk's S.M.A.R.T. data.

*Note that a reboot will be required immediately after activating the Drive Encryption process and clicking **Next**. You should save any open documents and close all applications before enabling this security feature.*

- 1 From the Administrator Console, Security Features page, select **Drive Encryption** and click **Next**.



2 Choose the non-removable hard drives that you want to encrypt.



3 Choose the removable (USB) drive where you want to store your recovery key.

4 Click **Next**.

Refer to the online help file within the Drive Encryption application or the DigitalPersona Pro Enterprise Administrator Guide for additional information.

Privacy Manager

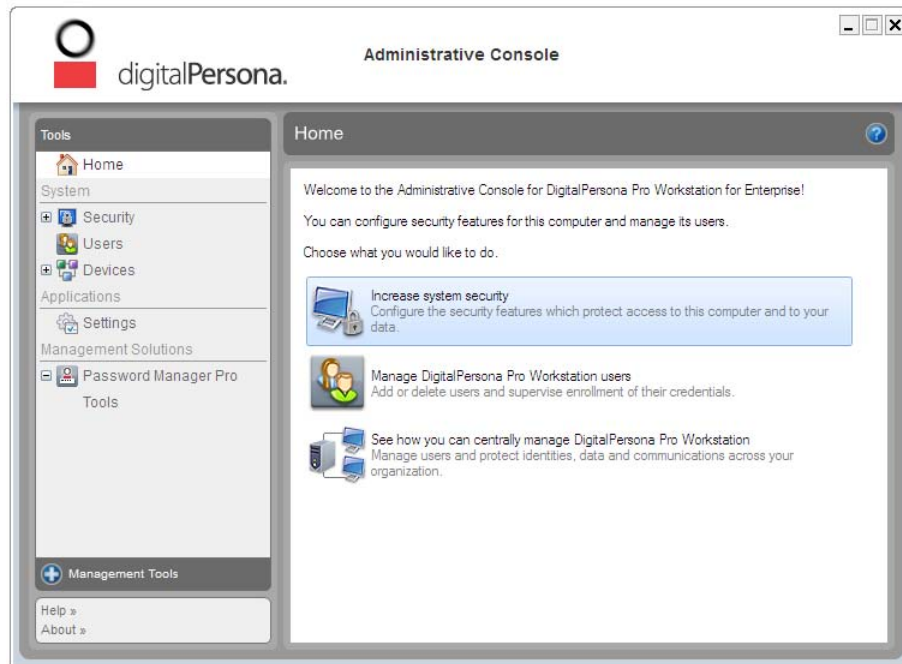
DigitalPersona Privacy Manager is an optional security application that plugs in to the Pro Enterprise Workstation dashboard, providing easy to use certificate-based encryption and signature functionality for Microsoft Outlook, Word, Excel and PowerPoint.

Privacy Manager provides extra security with convenient multi-factor authentication to make storing and sending your important information safe and secure.

By default, Privacy Manager utilizes personal digital certificates from Comodo, a leading global certificate authority, to encrypt your Office and Outlook communications and data. However, it can also be configured to allow use of pre-assigned corporate certificates and third-party certificates including Microsoft Certificate Authority certificates and any certificate exportable to the PFX (Personal Information Exchange) format.

Workstation Administrative Console

Local administration of Pro Workstation on a computer is provided through the Pro Enterprise Administrative Console.



The console can be launched from the shortcut at Start, All Programs, DigitalPersona Pro, or from within the Pro Enterprise dashboard. However, access to the console can be prohibited through the use of an Active Directory GPO setting available through the Pro Enterprise Server. In any conflict between local settings and GPO settings, the GPO setting always takes precedence.

Using the console, the local administrator has access to the following features and functions.

- Enabling or disabling security features - Depending on your computer's hardware and software configuration, the following security features may be available:
 - Windows Logon Security - Increase the security of your computer by enabling multi-factor and alternative credentials such as fingerprints, smart cards and facial recognition.
 - Drive Encryption - Protect your data by encrypting your hard drives, making the information unreadable by those without proper credentials.
- One Step logon - Allow logon to encrypted drives and Windows with a single use of specified credential(s).

- User management - Add or delete DigitalPersona Pro users. Users are automatically added when they log on to Windows or enroll credentials, but also can be added and deleted manually.
- Device management - Specify settings for supported authentication devices.
- Applications settings - Set computer-wide and application-specific settings including enabling and disabling installed Pro Workstation applications.
- Central management - Additional management tools may be available and can be downloaded directly from our website through the Central Management link in the lower-left corner of the console.

The Administrative Console also provides a foundation for additional Pro Enterprise administrative plug-ins which may be included in your specific solution, or ordered separately, such as DigitalPersona Password Manager Pro (see page 18).

Administration Tools

In addition to the numerous settings available for customizing and managing the behavior of DigitalPersona Pro Enterprise and its clients, there are two further types of administration tools provided.

- DigitalPersona Pro Administration Tools - A separate installable package that provides additional Active Directory-based tools including the License Activation Manager, the Users and Computers Snap-in, Attended Enrollment Tool and the User Query Tool.
- Administrative Console plug-ins - Individual components available to extend the administrative features of Pro Enterprise and allow for delegation of specific administrative functions, such as the creation of managed logons with Password Manager Pro.

For a more complete description of these tools, see the Administrative Tools section of the DigitalPersona Pro Enterprise Administrators Guide.

License Activation Manager

License Activation Manager is an Active Directory-based administration tool for installing and managing licenses for DigitalPersona Pro Enterprise Server and DigitalPersona clients such as DigitalPersona Pro Workstation or Kiosk and HP ProtectTools Security Manager; as well as licenses for some DigitalPersona Pro security applications and additional separately licensed features. Application licenses may also be individually activated on client computers.

This tool may be installed on the domain controller where DigitalPersona Pro Enterprise Server is installed, or on any computer in the domain. When installed on a workstation, it requires one of the following - depending on the Windows Server version running on the domain controller.

- If Windows Server 2008, install Microsoft Remote Server Administration Tools (available from the Microsoft Download Center).
- If Windows Server 2003, install Windows Server 2003 Administration Tools Pack (adminpak.msi).

Users and Computers Snap-in

The DigitalPersona Users and Computers Snap-in adds a new tab to the User Properties page enabling additional administrative functions. It also adds several DigitalPersona commands to the user and computer object context menus.

User properties define settings or actions that apply to a specific user, such as deleting fingerprints, attended credential enrollment and recovery from lockout of a user's Windows account.

Computer object commands allow recovery of access to a specific computer - for example due to lockout at the BIOS or encrypted drive level, and backing up the master encryption key for any encrypted drives on a computer.

This snap-in is automatically installed to the console during the installation of Pro Enterprise Server, and can also be added manually to any Active Directory aware computer.

Attended Enrollment Tool

Attended Enrollment is a feature included as part of the DigitalPersona Users and Computers Snap-in, and also as a separate component (the Attended Enrollment Tool) in the DigitalPersona Pro Administration Tools package. It can be used to add a higher level of security to the implementation and use of DigitalPersona Pro Enterprise.

With attended enrollment, a designated user (or member of a designated user group) is assigned the permission to supervise the credential enrollment process of other users. Users are prohibited from enrolling or managing their own credentials.

Use of the Attended Enrollment feature within the DigitalPersona Users and Computers Snap-in requires previous installation of the following components:

On the computer where DigitalPersona Pro Enterprise Server is installed -

- If Windows Server 2008, install Microsoft Remote Server Administration Tools (available from the Microsoft Download Center).

- If Windows Server 2003, install Windows Server 2003 Administration Tools Pack (adminpak.msi).
- Additional steps are necessary to set up Attended Enrollment as defined in the online help and the DigitalPersona Pro Enterprise Administration Guide.

On the computer where the Attended Enrollment Tool will be used -

- Install DigitalPersona Pro Workstation for Enterprise in Roaming mode.
- Install the DigitalPersona Pro Administration Tools package.

User Query Snap-in

The DigitalPersona Pro User Query Snap-in is used to query the DigitalPersona Pro Enterprise user database for information about DigitalPersona Pro users.

It can provide information such as:

- Total users
- Total enrolled users
- Users enrolled between certain dates
- Number of enrolled fingerprints per user
- Number of users using fingerprint logon
- Number of users utilizing managed logons
- and much more

The User Query Snap-in can be run as an Interactive Query, from the command line, or from within a script. It can be installed through the Custom option during installation of the Administration Tools. After installation it can also be run from **Start/DigitalPersona, User Query Tool**.

The User Query Snap-in must be installed on a computer with a licensed copy of DigitalPersona Pro Workstation, and the logged on user must have domain administrator privileges.

For further information about this tool, see the DigitalPersona Pro Enterprise Administrator Guide.

Password Manager Pro

Password Manager Pro, an optional plug-in to the DigitalPersona Pro Enterprise Administrative Console, enables administrators to provide controlled access to network resources, programs and websites by adding any of a variety of authentication mechanisms (such as password, smart card, fingerprints or Defender-compatible VPN tokens) to their logon and change password screens. These *managed logons* can then be automatically deployed to computers where the Password Manager application is installed and which are being managed by a DigitalPersona Pro server.

Setting up a logon screen can be as simple as specifying attributes (such as the user name, password, the submit button and other required fields) in a managed logon for the website or program. The change password process can also be automated by specifying details such as whether the password can be changed by the user at will, or must be changed at prescribed intervals, and any additional password format restriction.

Password Manager Pro also provides many configurable options for defining and reusing information for logon and change password screens.

Before using Password Manager Pro, you will need to set it up for your network. This consists of creating a shared network folder and enabling the “Managed Logons” setting for the GPO governing the DigitalPersona Pro clients that you wish to deploy the managed logons to. For instructions on these steps, see the Password Manager Pro chapter in the DigitalPersona Pro Enterprise Administrator Guide.

Creating managed logons

To create a managed logon

- 1 Launch the logon screen for a website or program.
- 2 Open the DigitalPersona Pro Administrator Console.
- 3 Click the **Password Manager Pro** topic.
- 4 On the **Logons** tab, choose a folder where the managed logons are to be stored.
This location must be accessible to computers where users will be using the logons.
- 5 Click **Add Logon**.
- 6 The Password Manager Pro Logon Screen Wizard displays. Follow the onscreen instructions to specify logon fields, attributes, values and properties. See the Password Manager Pro online help or the Administrator Guide for detailed instructions.

Deploying managed logons

To deploy managed logons:

The GPO setting, **path to the managed logons folder**, must be enabled on the Pro Enterprise Server, and you must have entered the path to the folder where the managed logons are stored, i.e. the folder that was created or selected by clicking the **Choose folder** button.

1. In Password Manager Pro, on the Logons page, check the boxes next to specific logons to change their status from *In Test* to *In Use*. (See illustration on previous page.) Only logons with an "In Use" status will be visible to users.
3. Click **Apply**.



After managed logons are deployed, a Password Manager icon on the screen tells the user that they can fill in the requested account data by verifying their identity with the required credentials. For more information on Password Manager Pro and Password Manager, see the DigitalPersona Pro Enterprise Administrator Guide.

After managed logons are created and deployed, they are made available to computers managed by DigitalPersona Pro after their next restart, or after a specified time interval as configured by the Pro administrator.

Depending on the settings applied by the administrator, the user may be prompted for account data, such as user name, password, and other information during the first logon. During subsequent logons, the account data is provided by Password Manager after the user's identity is confirmed by supplying the credentials required by the Session Authentication Policy in effect.

Password Manager Pro is included in certain Pro Server packages, and is also available as an optional add-in from your DigitalPersona Account Manager or product Reseller. Detailed documentation is provided in the online help available from within the product.

DigitalPersona Defender VPN module

The DigitalPersona Defender module provides generation and validation of One Time Passwords that support most RADIUS-based VPNs, such as CISCO and Juniper; and that can be used with any method or device that is based on OATH-compliant one-time passwords.

This one-time-password can be automatically generated on the user's PC, typically upon successful authentication using one of the strong identity methods that DigitalPersona Pro supports. The OTP can then be used with Password Manager Pro as an additional factor required for logging in to corporate VPNs through managed logons deployed by the administrator.

This feature requires separate installation of DigitalPersona Defender, an optional server product providing token-based two-factor authentication to network, website, and application-based resources. Additional information on this product is available from your DigitalPersona partner or our website at <http://www.digitalpersona.com/enterprise>.

Event Logging and Auditing

DigitalPersona Pro logs activity events and (optionally) status events to the Windows Event Log on the server, client and in some cases both computers. These events can be forwarded to a designated collector computer and reported on through DigitalPersona Reporter, a separately installed event collection, analysis and reporting component.

Administrators can view, sort, and export all local events from the Windows Event Viewer, or view forwarded events from the Windows Event Viewer Forward Events log on the collector computer. This assists administrators in meeting compliance requirements for Sarbanes-Oxley, Gramm-Leach-Bliley, and HIPAA.

For further details on DigitalPersona Reporter, see the corresponding chapter in the DigitalPersona Pro Enterprise Administrator Guide, available at

<http://www.digitalpersona.com/products/material>.

Additional Resources

Use the following resources for additional information about this product:

- The DigitalPersona Pro Enterprise Administrator Guide can be found on our website at: <http://www.digitalpersona.com/products/material>.
- The Readme.txt file containing last minute information is included in the product package.
- AskPersona.com (<http://www.askpersona.com>) is a DigitalPersona Knowledge Portal providing answers to many frequently asked questions about our enterprise and consumer products.
- DigitalPersona Maintenance and Support customers will find additional information about technical support resources in their Maintenance and Support confirmation email.

Online Help is available for all enterprise and consumer products, and can be accessed from within each product.

This guide and the software it describes are furnished under license as set forth in the applicable End User License Agreement (the "EULA") located in the product package; are furnished for informational use only, and are subject to change without notice.

© 1996-2011 DigitalPersona, Inc. All Rights Reserved. DigitalPersona, the DigitalPersona logo, U.are.U and One Touch are trademarks of DigitalPersona, Inc. registered in the United States and other countries. All other trademarks and registered trademarks are the property of their respective owners. Published (5.1.2): June 6, 2011