

# DigitalPersona® Pro Enterprise

Version 5.2

## *Migration Guide*



digitalPersona.

**© 2011 DigitalPersona, Inc. All Rights Reserved.**

All intellectual property rights in the DigitalPersona software, firmware, hardware and documentation included with or described in this guide are owned by DigitalPersona or its suppliers and are protected by United States copyright laws, other applicable copyright laws, and international treaty provisions. DigitalPersona and its suppliers retain all rights not expressly granted.

U.are.U® and DigitalPersona® are trademarks of DigitalPersona, Inc. registered in the United States and other countries. Windows, Windows Server 2003/2008, Windows Vista, Windows 7 and Windows XP are registered trademarks of Microsoft Corporation. All other trademarks are the property of their respective owners.

This DigitalPersona Pro Enterprise Migration Guide and the software it describes are furnished under license as set forth in the “License Agreement” screen that is shown during the installation process.

Except as permitted by such license, no part of this document may be reproduced, stored, transmitted and translated, in any form and by any means, without the prior written consent of DigitalPersona. The contents of this document are furnished for informational use only and are subject to change without notice.

Any mention of third-party companies and products is for demonstration purposes only and constitutes neither an endorsement nor a recommendation. DigitalPersona assumes no responsibility with regard to the performance or use of these third-party products.

DigitalPersona makes every effort to ensure the accuracy of its documentation and assumes no responsibility or liability for any errors or inaccuracies that may appear in it.

#### Feedback

Although the information in this guide has been thoroughly reviewed and tested, we welcome your feedback on any errors, omissions, or suggestions for future improvements. Please contact us at

TechPubs@digitalpersona.com.

or DigitalPersona, Inc.  
720 Bay Road  
Suite 100  
Redwood City, CA 94063  
USA

## Table of Contents

Introduction .....	4
Migration overview .....	5
Migration steps .....	5
1 - Create and test your Migration Plan .....	5
2 - Extend the Active Directory Schema .....	7
3 - Configure the domain .....	8
4 - Backup system state .....	8
5 - Install Pro Enterprise Servers .....	9
6 - Deploy and activate new licenses .....	9
Installing License Activation Manager .....	9
Activating Pro Enterprise Server licenses .....	10
Deploying Pro Enterprise client licenses .....	12
Activation from another computer .....	14
7 - Review applied policies and settings .....	14
8 - Install new Pro 5.2 clients .....	16
9 - Replace Administration Tools .....	16

## 5.2 DigitalPersona® Pro Enterprise Migration Guide

---

### Introduction

---

The purpose of this document is to provide the administrator with a general guide to migrating from DigitalPersona Pro for Active Directory 4.4.3 to DigitalPersona Pro Enterprise 5.2. The guide assumes a fairly simple scenario:

- A single domain with two domain controllers
- DigitalPersona Pro Server 4.4.3 installed on each domain controller
- All DigitalPersona Pro clients are 4.4.3.

Note that versions previous to 4.4.3 cannot be upgraded to DigitalPersona Pro Enterprise 5.2. If you need to upgrade from an earlier version, first upgrade to Pro 4.4.3 and then to Pro Enterprise 5.2. Upgrade Notes for previous versions are available on our website at:

<http://www.digitalpersona.com/support/reference-material/pro-upgrade-notes/>.

*DigitalPersona Pro Enterprise 5.2 Server introduces a new licensing structure.*

Installation of the first 5.2 server will activate this new licensing structure. Although **current** users of 4.4.3 clients will be unaffected by this change, you will not be able to enroll credentials for any **new** users until the appropriate Pro Server licenses are activated.

***WARNING:** Pro Enterprise Server 5.2 does not install over, or upgrade Pro 4.4.3 Pro for Active Directory Server. You must uninstall Pro for Active Directory Server 4.4.3 (and any add-ons you may have installed) prior to the installation of Pro Enterprise Server 5.2.*

*It is also critical that all Pro 4.x **Servers** are removed prior to the installation of any Pro 5.2 **clients**. Failure to do so will result in corruption of user data and unpredictable results.*

*Pro 5.2 clients are not compatible with Pro 4.4.3 servers. Do not install any Pro 5.2 clients until all Pro Servers in the domain have been upgraded to 5.2.*

---

## Migration overview

---

We recommend that your Migration Plan should address the following minimum list of activities and procedures. Your specific environment may require additional procedures. As with any major software installation, a well thought-out and tested rollback procedure should be included.

<input checked="" type="checkbox"/>	Description	Page
<input type="checkbox"/>	1 - Create and test your Migration Plan	5
<input type="checkbox"/>	2 - Extend the Active Directory Schema	7
<input type="checkbox"/>	3 - Configure the domain	8
<input type="checkbox"/>	4 - Backup system state	8
<input type="checkbox"/>	5 - Install Pro Enterprise Servers	9
<input type="checkbox"/>	6 - Deploy and activate new licenses	9
<input type="checkbox"/>	7 - Review applied policies and settings	14
<input type="checkbox"/>	8 - Install new Pro 5.2 clients	16
<input type="checkbox"/>	9 - Replace Administration Tools	16

---

## Migration steps

---

### ***1 - Create and test your Migration Plan***

Create a migration plan and fully test it in a development environment approximating your production environment before performing the upgrade in your production environment.

There have been significant changes in DigitalPersona Pro since 4x. Check the Upgrade Notes at <http://www.digitalpersona.com/support/reference-material/pro-upgrade-notes> for changes that may impact your migration plan and your production environment.

For example:

- Review any existing multi-credential logon policies to ensure that they will not prevent users from logging in to their computer after the migration.
- Review any user based policies implemented in 4.x through the Extended Server Policy Module (ESPM), which is not available in Pro 5.2. This includes the "Randomize user's Windows password" feature.
- The "Fingerprint Logon to DCs", a separate optional package in 4.x, is not available in Pro 5.2.
- Support for 4.x Kiosk-specific identification lists is not available in Pro 5.2. See the Identification List chapter in the Pro Enterprise 5.2 Administrator Guide for instructions on creating an identification list in 5.2.
- Microsoft smart cards are not supported in Pro 5.2. PKCS#1 and CSP smart cards are supported.
- System requirements for Pro Enterprise Server and clients have changed significantly since version 4.x. See the DigitalPersona Pro Enterprise 5.2 Administrator Guide for a complete description of minimum requirements.
- Pro 5.2 is not compatible with DigitalPersona Pro Online.

Please review the DigitalPersona Pro Upgrade Notes for the current version, available on our website, and the readme.txt files included with each component in the product package, for any other changes that may affect your specific environment.

## 2 - Extend the Active Directory Schema

DigitalPersona Pro Enterprise provides a wizard that will upgrade the DigitalPersona schema extension. The schema extension is backward compatible with the Pro 4.4.3 schema extension, so there should be no negative impact on DigitalPersona Pro functionality from this part of the upgrade.

The Active Directory Schema Extension Wizard automatically handles all of the necessary changes to the schema. This schema extension is global to the Active Directory forest, and only needs to be run once during the migration.

If you want to view the script that is used to extend the schema (dp-schema.ldif), it is available in the product package at the following location:

```
\Pro Enterprise Server\Schema Extension\dp-schema.ldif
```

Complete details on the extensions are also provided in the DigitalPersona Pro Enterprise 5.2 Administrator Guide.

The Active Directory Schema Extension Wizard must be run from the schema master domain controller, or the data may not replicate fast enough to allow the wizard to continue. If the data is not replicated fast enough, the wizard will terminate, and you should then wait one replication cycle before running the wizard again.

After running the schema extension, you should wait at least 30 minutes for schema replication to be completed before running the Domain Configuration Utility in step 3. The actual amount of time replication takes will depend on the complexity of your Active Directory structure.

You must have Schema Administrator privileges to run the Schema Extension Wizard.

### To run the Active Directory Schema Extension Wizard

- 1 Double-click **DPSchemaExt.exe**, which is located in the Schema Extension folder in the Pro Enterprise Server installation package, to start the Schema Extension Wizard.
- 2 Specify a location and name for the log file generated by the Schema Extension Wizard in the **Save Log File As** dialog box. Then, click **Save**.
- 3 If the schema is not writable, the wizard will ask for permission to make it writable. Click **Yes** to continue and begin the schema extension.

### **3 - Configure the domain**

You should run the Domain Configuration wizard only once in a given domain, after adequate time has passed for the schema extension to be replicated (at least 30 minutes, although it may take longer in complex Active Directory environments. Running the wizard requires administrator privileges on the domain controller.

Running the wizard a second time during a single replication period will result in corrupted Server data, and any DigitalPersona Pro Enterprise Servers in the domain will be unusable.

After running the Domain Configuration wizard, domain level permissions to enroll/delete fingerprints are reset to the default, i.e. Allow.

#### **To run the DigitalPersona Pro Enterprise Domain Configuration Wizard**

- 1 Double-click **DPDomainConfig.exe**, which is located in the Domain Configuration folder in the Pro Enterprise Server installation package.
- 2 A warning reminds you not to run this wizard if you have an existing DigitalPersona Pro Enterprise Server installation on this domain. If you are sure there are no other DigitalPersona Pro Enterprise Server installations on the domain you are configuring, check the **I accept that the domain will be configured** box and click **Next**.
- 3 In the **Save Log File As** dialog box, specify a file name and folder path for the log file generated by the wizard.
- 4 Click **Save** to begin performing the changes on the domain.
- 5 Follow any onscreen instructions.

### **4 - Backup system state**

Note that a complete system state backup of Active Directory is recommended prior to installing any DigitalPersona Pro Enterprise servers or clients. Changes made to some DigitalPersona Pro data during the Pro Enterprise Server installation are not reversible.

## 5 - Install Pro Enterprise Servers

See the Introduction for important information about the new DigitalPersona Pro licensing structure before installing any DigitalPersona Pro Enterprise 5.2 Servers.

Pro Enterprise Server *does not* install over, or upgrade Pro 4.4.3 Pro for Active Directory Server. You must uninstall Pro for Active Directory Server 4.4.3 (and any add-ons you may have installed) prior to the installation of Pro Enterprise 5.2.

It is critical that all Pro 4.x Servers are removed and replaced with Pro Enterprise 5.2 Servers prior to the installation of any Pro 5.2 clients. Failure to do so will result in corruption of user data and unpredictable results.

### To install Pro Enterprise Server 5.2

- Double-click **Setup.exe**, which is located in the Pro Enterprise Server folder in the installation package.

## 6 - Deploy and activate new licenses

As soon as your Pro Enterprise 5.2 Servers are installed, you should deploy and activate your new Pro Enterprise Server licenses. Pro 5.2 client licenses should be deployed at the same time. The primary means of installing your licenses is through Active Directory and the DigitalPersona Pro License Activation Manager.

### Installing License Activation Manager

The DigitalPersona Pro License Activation Manager is used to activate licenses for DigitalPersona Pro Enterprise 5.2 Server and clients. You may also want to install additional Administration Tools at this time. See step 9 for a list of the available Pro 5.2 Administration Tools, or the DigitalPersona Pro Enterprise Administrators Guide for full information on the tools.

To install the License Activation Manager

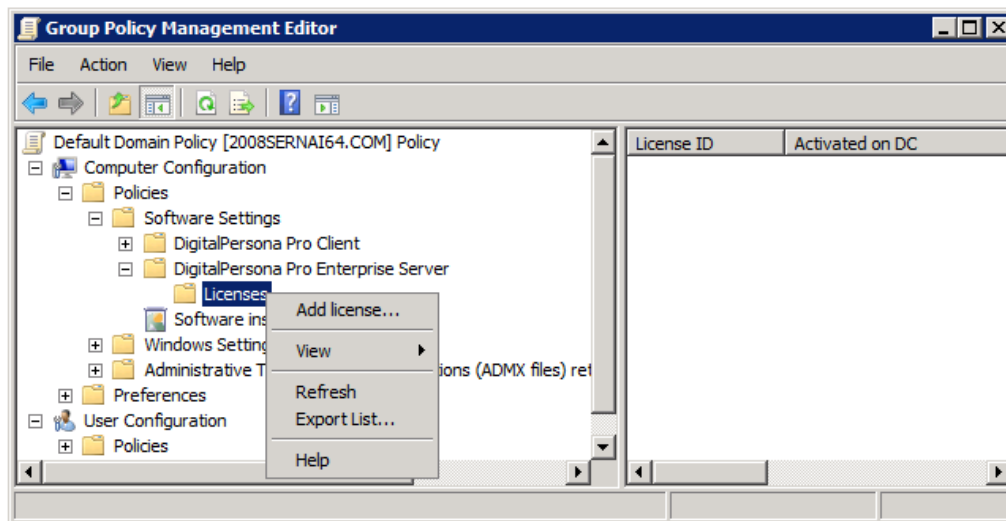
- 1 Locate and launch the setup.exe located in the Pro Enterprise Server\Pro Administration Tools folder of the DigitalPersona Pro Enterprise product package.
- 2 Select **Complete** or **Custom** installation. To install *only* the License Activation Manager, select Custom and deselect all other administration tools.
- 3 Click **Next**, and then click **Install**.

## Activating Pro Enterprise Server licenses

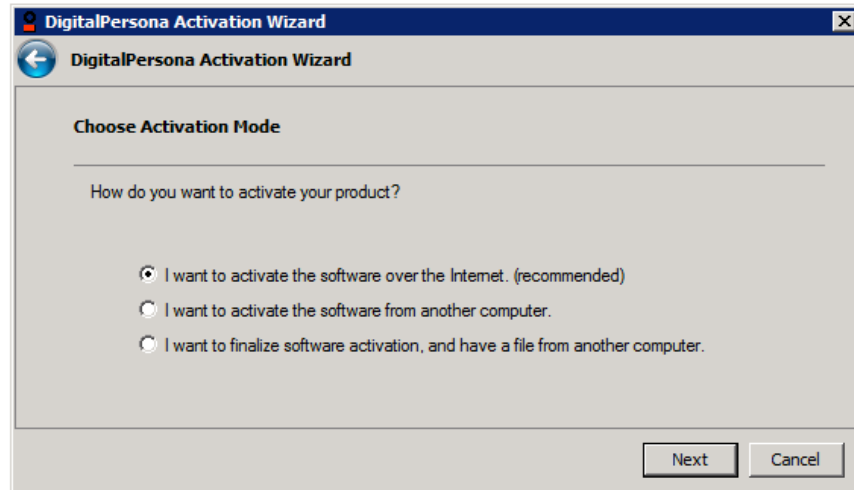
Your Pro Enterprise 5.2 Servers are activated through Active Directory after installation has been completed.

To add a DigitalPersona Pro Enterprise Server license

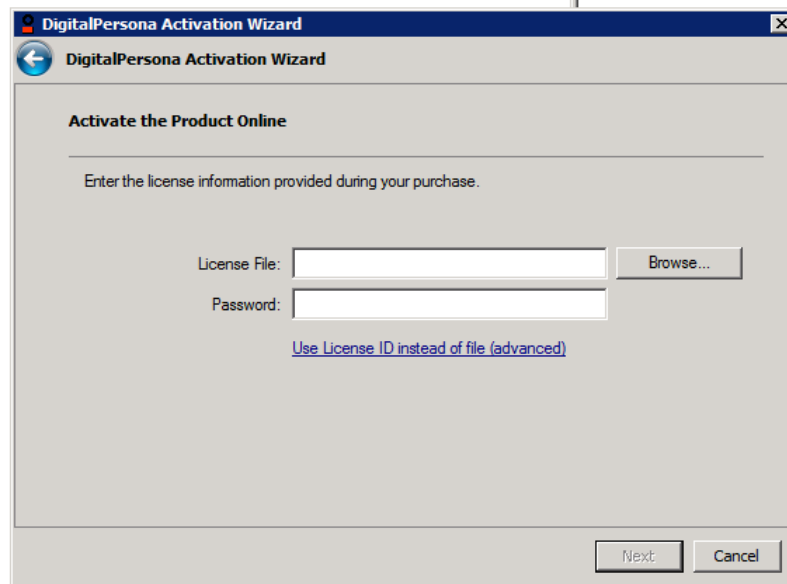
- 1 Do one of the following.
  - Windows 2008 Server - Launch the Group Policy Management Editor and navigate to Computer Configuration, Policies, Software Settings, DigitalPersona Pro Enterprise Server, Licenses.
  - Windows 2003 Server - Launch the Group Policy Object Editor and navigate to Computer Configuration, Software Settings, DigitalPersona Pro Enterprise Server, Licenses.
- 2 Right-click on **Licenses** and select **Add license**.



- 3 When the DigitalPersona Activation wizard displays, click **Next**.



- 4 Select the option to **I want to activate the software over the Internet.**
- 5 On the next page, browse to the License Activation (.dplic) file provided with your purchase. Or, if you have a License ID and password instead, click the provided link to enable entering them.



- 6 Click **Next**. Upon successful activation, a confirmation dialog will display.

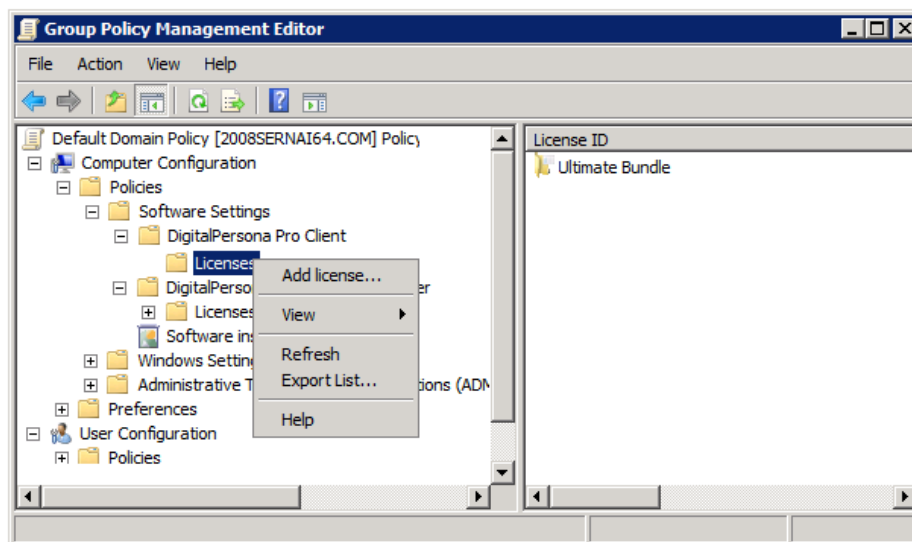
## Deploying Pro Enterprise client licenses

Your DigitalPersona Pro 5.2 client licenses may be deployed through Active Directory. Once deployed, client licenses for client workstations will be automatically activated over the internet as soon as they access the Pro Enterprise Server. If they do not have internet access, see the next topic, Activation from another computer.

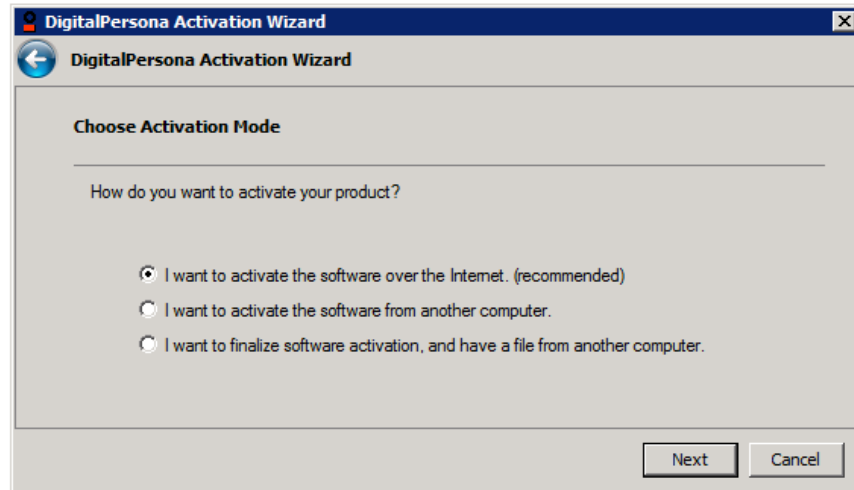
Pro 5.2 clients and optional Pro Security Applications may also be individually activated at the workstation if circumstances require it. The DigitalPersona Activation Wizard can be accessed from the About dialog on Pro 5.2 clients or from a dialog that is displayed whenever an unlicensed client or security application is accessed.

### To deploy Pro Enterprise client licenses

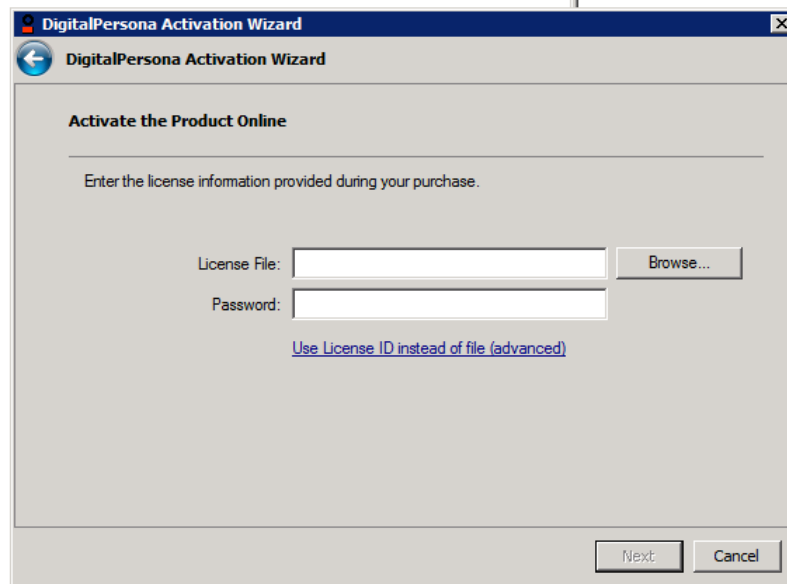
- 1 Do one of the following.
  - Windows 2008 Server - Launch the Group Policy Management Editor and navigate to Computer Configuration, Policies, Software Settings, DigitalPersona Pro Client, Licenses.
  - Windows 2003 Server - Launch the Group Policy Object Editor and navigate to Computer Configuration, Software Settings, DigitalPersona Pro Client, Licenses.
- 2 Right-click on a **Licenses** and select **Add license**.



- 3 When the DigitalPersona Activation wizard displays, click **Next**.



- 4 Select the option to **I want to activate the software over the Internet.**
- 5 On the next page, browse to the License Activation (.dplic) file provided with your purchase. Or, if you have a License ID and password instead, click the provided link to enable entering them.



- 6 Click **Next**. Upon successful activation, a confirmation dialog will display.

## Activation from another computer

Licenses for DigitalPersona products on computers that are not part of the domain, or are not connected to the internet, may be activated from any computer with an internet connection. For details on this procedure, see the DigitalPersona Pro Enterprise Administrator Guide.

## 7 - Review applied policies and settings

DigitalPersona Pro Enterprise 5.2 includes new and updated administrative templates (.admx and .adm files). These files are automatically copied to the system's default folder for administrative templates during installation of DigitalPersona Pro Enterprise Server.

- On Windows Server 2003, this folder is %systemroot%\Windows\inf<language>.
- On Windows Server 2008, the folder is %systemroot%\Windows\PolicyDefinitions.

All policies and settings supported by Pro 5.2 and included in the .admx administrative templates (supported on Windows Vista/7 and Windows Server 2008) should migrate successfully as part of the Pro Enterprise Server installation. However, you should verify that all previously used settings are present and configured properly. Refer to the Policies and Settings chapter of the Administrator Guide for a complete list of supported policies and settings. For details on policies or settings added or deleted, see the Pro 5.2 Upgrade Notes.

Policies and settings implemented through .adm files (other supported Windows operating systems earlier than Windows Vista/7 and Windows Server 2008) will not migrate automatically. You will need to

- 1 Manually remove previous administrative templates linked to each GPO.
- 2 Add new administrative templates to existing GPOs.
- 3 Verify that all needed policies and settings are correctly configured for your environment.

DigitalPersona Pro for Active Directory 4.4.3 included the administrative templates (.adm/admx files) listed below.

DigitalPersonaPro  
DigitalPersonaProWksta  
DigitalPersonaProWkstaKiosk  
DigitalPersonaProSvr  
DigitalPersonaProIDServer  
DigitalPersonaProSvrKiosk  
DigitalPersonaProSDK

DigitalPersona Pro Enterprise 5.2 includes the following administrative templates.

Template Name	File Name	Description
DigitalPersona Pro Administrative Template	DPro5Root	Creates a root-level folder and categories for all DigitalPersona Pro products.
DigitalPersona Pro Enterprise Server Administrative Template	DPro5Server	Apply to GPOs where it can be distributed to Domain Controllers running DigitalPersona Pro Enterprise Server.
DigitalPersona Pro Workstation for Enterprise Administrative Template	DPro5Client	Apply to GPOs where it can be distributed to computers running DigitalPersona Pro Workstation for Enterprise. It can also be applied to a local GPO for a standalone installation of DigitalPersona Pro Workstation for Enterprise.
DigitalPersona Pro Enterprise ID Server Administrative Template	DPro5IDServer	Apply to GPOs where it can be distributed to Domain Controllers running DigitalPersona Pro Enterprise Server.
DigitalPersona Pro Enterprise Server Authentication Policies Administrative Template	DPro5ClientAuthPol	Apply to GPOs where it can be distributed to computers running DigitalPersona Pro Workstation for Enterprise. It can also be applied to a local GPO for a standalone installation of DigitalPersona Pro Workstation for Enterprise.
DigitalPersona Pro Kiosk Administrative Template	DPro5ClientKiosk	Apply to GPOs where it can be distributed to computers running DigitalPersona Pro Kiosk.
DigitalPersona Password Manager Administrative Template	DPPasswordManager	Apply to GPOs where it can be distributed to computers running DigitalPersona Password Manager.
DigitalPersona Privacy Manager Administrative Template	DPPrivacyManager	Apply to GPOs where it can be distributed to computers running DigitalPersona Pro Privacy Manager.
DigitalPersona Drive Encryption Administrative Template	DPro5FVE	Apply to GPOs where it can be distributed to computers running DigitalPersona Drive Encryption.
DigitalPersona Reporter Administrative Template	DPro5EvForwarding	Apply to GPOs where it can be distributed to computers running DigitalPersona Pro Workstation for Enterprise.

You will need to verify that previous policies and settings are in place and working.

For a complete list of available policies and settings, see the DigitalPersona Pro Enterprise Administrator Guide chapter on Policies and Settings. For a quick reference, see the alphabetical listing of policies and settings in the Administrator Guide Appendix.

After adding the appropriate administrative templates, check to ensure that there are no DigitalPersona registry settings listed in Active Directory under the Additional Registry Settings node.

## **8 - Install new Pro 5.2 clients**

### **WARNINGS:**

- It is critical that all Pro 4.x Servers are removed prior to the installation of any Pro 5.2 clients. Failure to do so will result in corruption of user data and unpredictable results.
- Ensure that installed licenses for Pro 5.2 clients and features are adequate for the number of computers and users currently being managed by your Pro Enterprise deployment as well as for planned expansion. Licenses for 4.4.3 clients will not be valid in the Pro 5.2 environment, and users may be prohibited from logging on with their fingerprints.

Installation of a Pro Enterprise 5.2 client removes any locally cached secrets and credential data on the computer. As long as the computer has access to a Pro 5.2 server, this should not affect the user since the information will be refreshed from the server. However, if the Pro Enterprise client does not have access to a Pro Server (due to network problems or licensing issues), they will not be able to logon to Windows with their Pro Enterprise managed credentials or use any Password Manager logons.

- Run setup.exe from the Pro Workstation or Pro Kiosk folder in the product package.

For detailed instructions on installation of specific DigitalPersona Pro Enterprise clients, see the Administrator Guide.

## **9 - Replace Administration Tools**

If DigitalPersona Pro Administration Tools were not installed in step 5, you should install them now. The Administration Tools provided with Pro 4.x will not work with Pro Enterprise 5.2. For further information on the DigitalPersona Pro Administration Tools, see the corresponding chapter in the Pro Enterprise Administrators Guide.

- Remove any installations of Pro 4.4.3 Administration Tools and replace them with the corresponding 5.2 versions. These may include:

4.x Administration Tool	5.2 Version
License Control Manager	License Activation Manager
User Properties Snap-in	Users and Computers Snap-in
Attended Fingerprint Enrollment Tool	Attended Enrollment Tool
One Touch SignOn Administration Tool	Password Manager Pro*
User Query Tool	User Query Snap-in

\* The One Touch SignOn Administration Tool, which was part of the Administration Tools installation package in 4.x, is now a separately installed option (renamed Password Manager Pro) in the Ultimate version of DigitalPersona Pro Enterprise 5.2.

- Install the Pro 5.2 Administration Tools from the Administration Tools folder in the product package.